



User Manual



Aluminium-enclosure 5.25"

USB 2.0 (136355)

COMBO (USB 2.0 & FireWire IEEE1394a (136359))

Package Contents

In the box you will find:

- Aluminium-enclosure for 3.5" and 5.25" IDE devices
- USB 2.0 cable
- Firewire IEEE1394a-cable 6-6 (136359 only)
- AC-Power Adaptor 5V/12V
- Power cord for power adaptor
- Mounting frame for 3.5" harddisks
- Screwdriver
- DRIVER CD for Win98 SE

If there are any parts missing, please contact your dealer.

Installation of IDE devices



CAUTION!

Only use in dry locations. Only use with provided power supply. Do not open power supply!

a) Press the button on both side at the back of the enclosure and remove the side-strips.

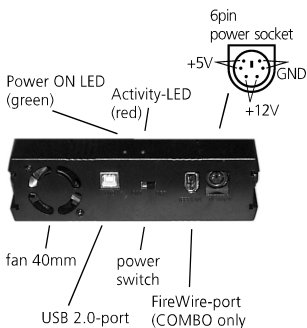
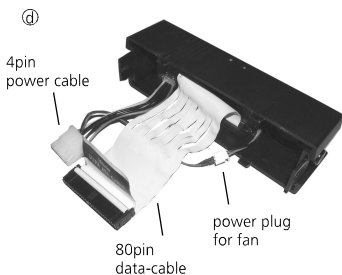
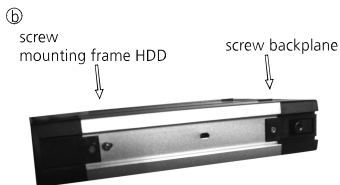
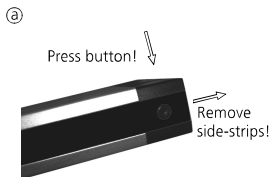
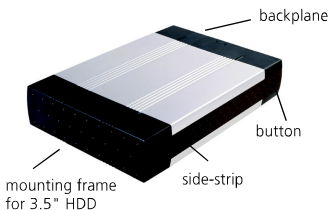
b) Remove the screws of the backplane and pull it out carefully. Remove the screws of the mounting frame for 3.5" HDD and take it out.

c) If a harddisk should be installed in the enclosure, please fix it with the provided screws on the mounting frame. Put back the mounting frame into the enclosure and fix the screws carefully.

If a CD-/DVD-ROM-/Writer etc. should be installed, insert the device from the front and fix it with the provided screws.

Please be sure, that the device is configured as MASTER!

d) Connect the 80pin data-cable and the 4pin power-cable of the backplane to the device. Both plugs are protected against polarity reversal and should be easily connected to the harddisk. If not, please check if you use the plugs in the right way.



By default the fan of the enclosure is activated. If you use devices, which do not produce much heat during operation, the fan can be deactivated by removing the power plug for fan.

e) Insert the backplane into the enclosure, fix the screws and install back the side-strips on the enclosure.

f) Plug in the power cord of the power adaptor in an adequate outlet (100-240VAC) and connect the 6pin-connector of the power adaptor to the enclosure. Now connect the enclosure with the provided data-cable to the USB-port (USB 2.0 recommended for full speed) or FireWire-port (COMBO-version only) of your PC.

Using the USB-Port (USB 2.0-version)

Power on the enclosure! If you use Windows ME/2000/XP, MAC OS Version 9.0 above or an actual LINUX-distribution, your harddisk will be recognized automatically by the operating system.

For Win98 SE an additional driver must be installed from the provided Driver CD.

After recognizing the enclosure as "New Device" please select "search for available driver" and confirm with "Next".

Then choose "Specify a location" and insert the provided DRIVER CD into your CD-ROM. Select the path **DRIVERS/CYPRESS**.

Confirm the following two boxes with "Next" and the Cypress-Driver for your enclosure will be installed.

Using the USB-Port (COMBO-version)

If you use Windows ME/2000/XP, Mac OS Version 9.0 above or an actual LINUX-distribution, your harddisk will be recognized automatically by the operating system after power-on.

For Win98 SE an additional driver must be installed from the provided Driver CD:

Do not power on the enclosure, but first insert the provided DRIVER CD into your CD-ROM drive. Open the folder **DRIVERS/PL3507** and install the driver with doubleclick (File with extension.EXE).

Please follow the instructions on the screen. After finishing the installation-routine you now can power on the enclosure and Win98 SE will automatically recognize the device.

Using the FireWire-port (COMBO-version only)

If the enclosure is connected to the FireWire-Port, no additional drivers are required, because the drivers of the FireWire-card or operating system are used (perhaps you have to install the latest operating system update first). If the provided FireWire-cable does not fit to your FireWire port, because you have a 4pin-FireWire port, you have to buy a new FireWire-cable 6-4 from your dealer.

Additional hints / Troubleshooting

If you have the COMBO-version of the case only **one** data-cable must be connected to the enclosure (**either** USB-cable **or** Firewire-cable)!

- If you use a brand-new harddisk, it is necessary to partition and format the harddisk. Please follow the instructions of your operating system.
- To prevent data loss, you should always use the function "Safely remove" if you want to remove the enclosure during running PC.
- Your enclosure is equipped with a modern CYPRESS-chipset (USB 2.0-version) or Prolific PL3507-Chipset (COMBO-version) and will work with all current IDE devices. If you find an IDE device, which is not recognized by your PC, please try to change the configuration of the device from MASTER to SLAVE or CABLE SELECT.
- Some IDE devices become very hot during operation. To prevent malfunction/damage we recommend to use an adequate cooling for the enclosure - especially in hot environments, or to use another model.

Actual drivers, support information and information about other equip-products you will find at our website

<http://www.equip-info.net>

Manufacturer: Digital Data Communications GmbH,
Zeche-Norm-Str. 25, D- 44319 Dortmund, Germany.

All trademarks are registered by their respective owners.

The information contained herein is subject to change without notice and is provided "as is" without warranty of any kind.

