

Hi-Speed USB-to-IDE Device Drive Windows 98 Driver and Safe Remover Utility Installation and Operating User's Manual

For Windows 98SE Only

Version 1.0 (05/17/2004)

Introduction

Before you can use the Hi-Speed USB-to-IDE drive in Windows 98 operating system, you first need to run the Setup program in the Utility CD provided together with the product. This Setup program will help you to pre-install the needed device driver for detecting the drive under Windows 98 as well as adding the Safe Remover program. This manual provides information on how to install and run the Safe Remover Utility.

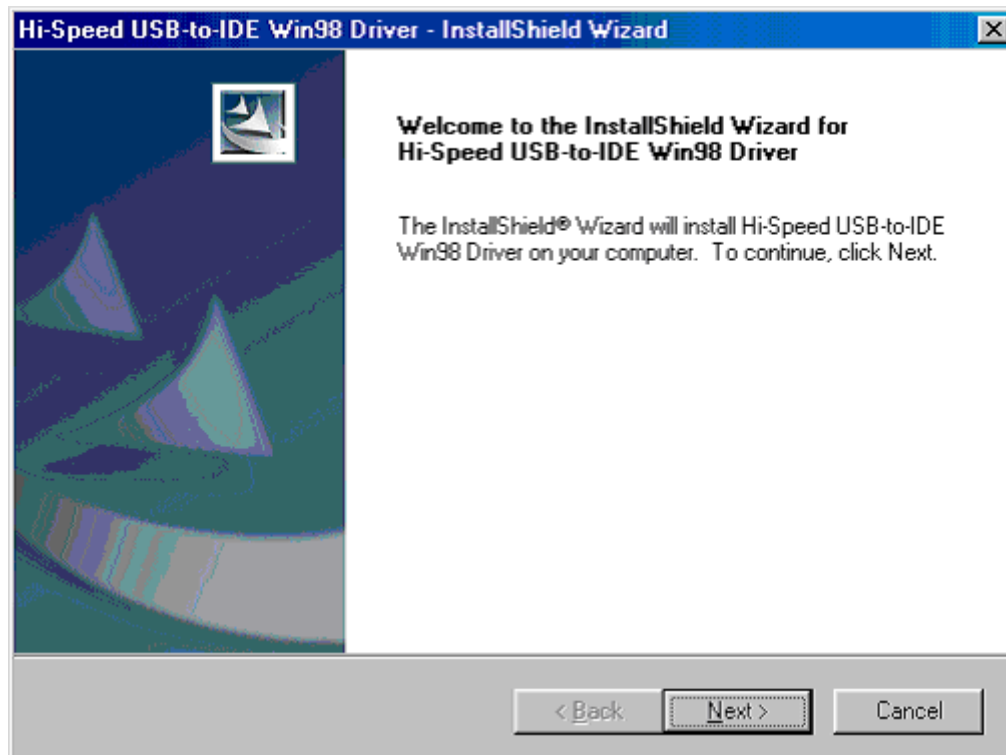
Running the Setup Program

Follow the steps below in running the Setup program:

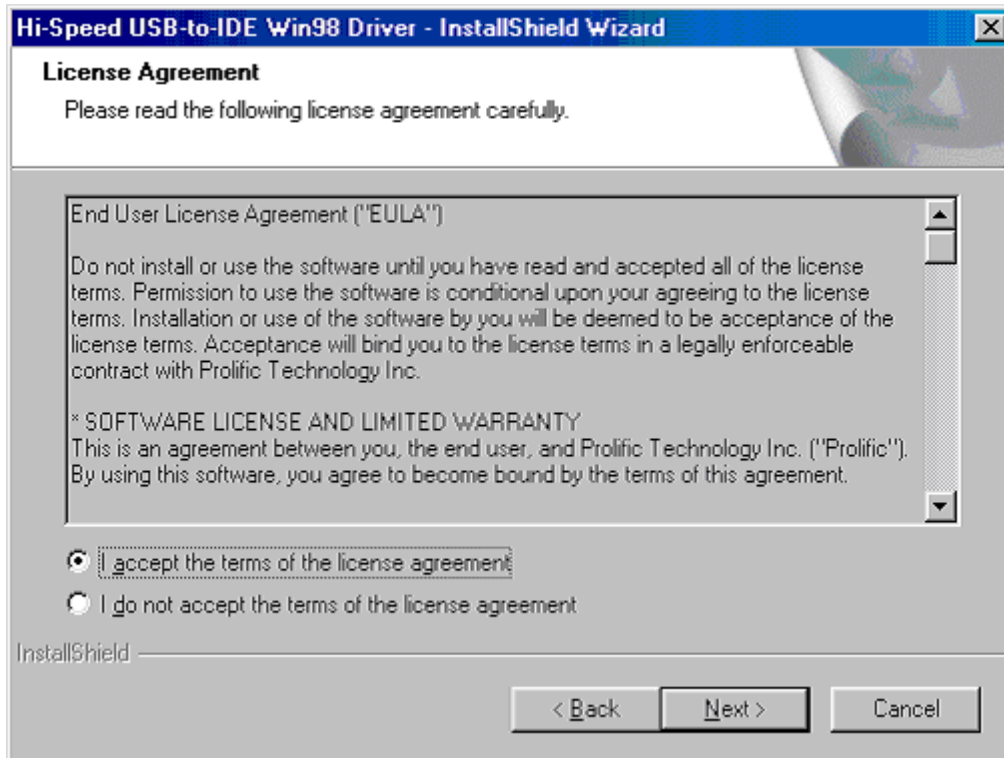


This Setup program will only run in Windows 98 or Windows 98SE version Operating Systems. The driver and Safely Remove feature are already provided in the succeeding versions of Windows like ME, 2000, and XP. ONLY plug-in the device after completing the Setup program installation.

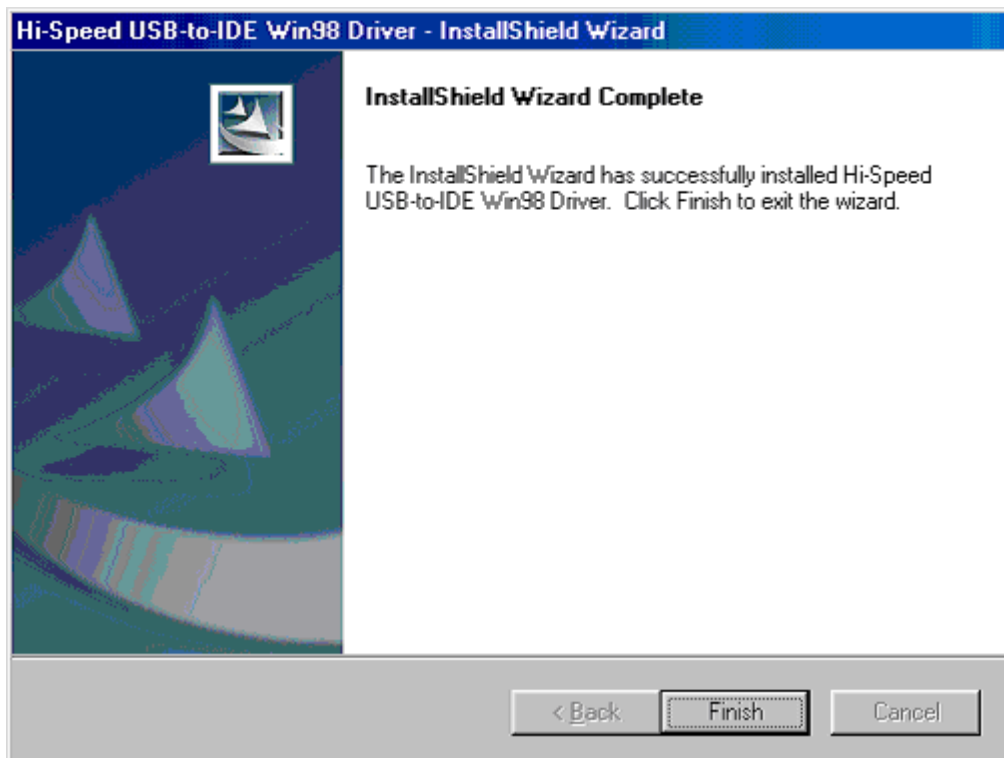
1. Insert the Utility CD inside your CDROM drive and double-click the SETUP program.
2. The InstallShield Wizard will then start and will prompt you if you want to start installing the Hi-Speed USB-to-IDE Win98 Driver. Click Next to continue.



3. InstallShield Wizard will then show the End User License Agreement (EULA) window stating the copyrights of the software maker. Click "I accept the terms of the license agreement" and click Next to continue.



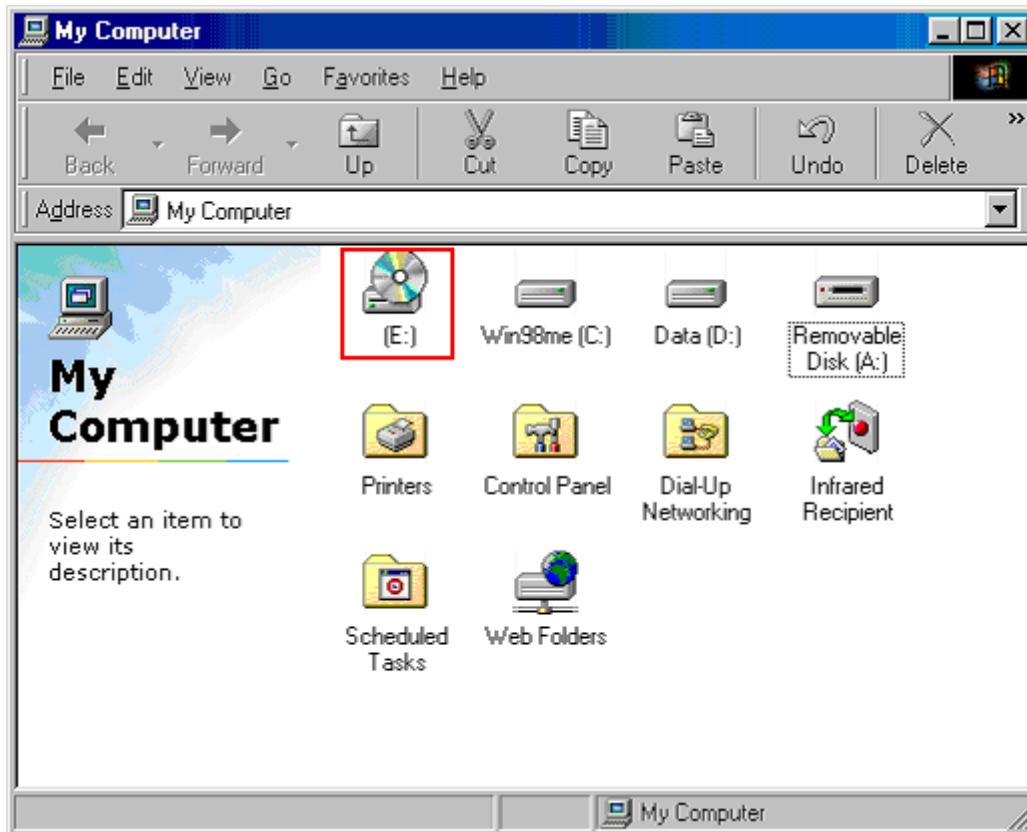
4. InstallShield Wizard will then start to copy the needed drivers and programs into your computer. When complete, it will prompt you that InstallShield Wizard has successfully installed the Hi-Speed USB-to-IDE Win98 Driver. Click the Finish button to exit.



Installing the USB-IDE Drive

After completing the Setup program installation, you can now ready to setup the device drive to run under Windows 98. Follow the steps below to setup the drive:

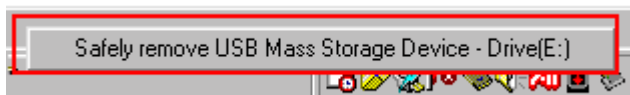
1. Power on the USB-IDE drive and plug-in a USB cable to the USB connector port of the drive. Plug-in the other end of the USB cable to the USB port of your computer.
2. Windows will automatically detect the drive and will use the pre-installed driver to setup the drive. Click My Computer to check if the device drive is properly detected and the drive letter is properly assigned (Drive E:).



3. If the drive is properly detected, the Safe Remover icon will also appear on the taskbar found on the bottom right side of the Windows desktop screen.



4. Click on the Safe Remover icon to show the detected device and drive letter.



Using the Safe Remover Utility

The Safe Remover program allows you to safely remove the USB-IDE device to ensure that the files are stored properly and to prevent any data loss. You need to run the Setup program in order to properly setup the Safe Remover utility.

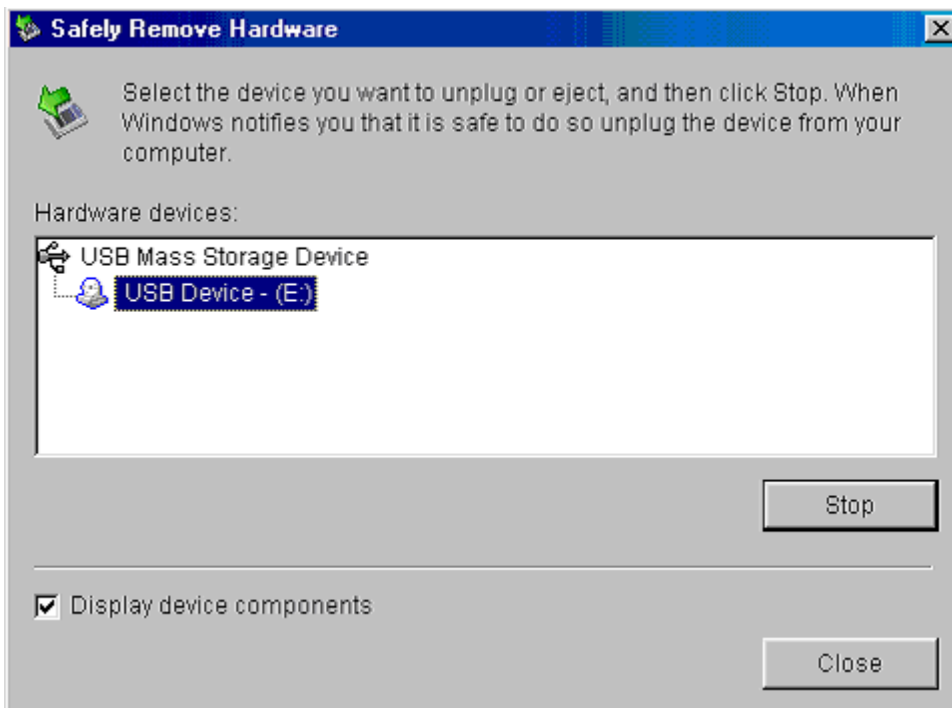


It is highly advisable that you safely remove the device first before you unplug especially after copying files. Safely removing the device ensures that files are properly in place and prevents any data loss.

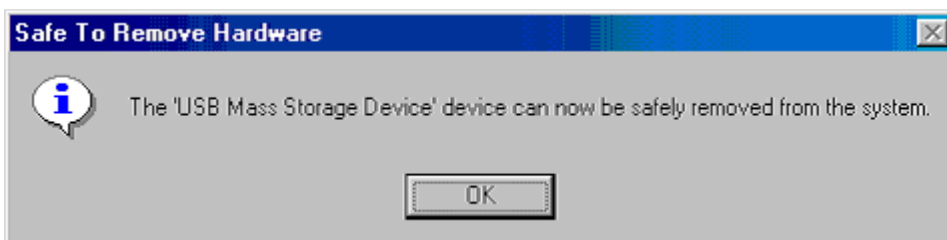
1. Whenever you plug the device drive into the USB port, the Safe Remover icon will instantly appear on the taskbar found on the bottom right side of the Windows desktop screen. Click on the Safe Remover icon to show the detected device and drive letter.



2. To see more information about the device drive, double-click on the Safe Remover icon. The Safely Remove Hardware window will appear. Click the Stop button to safely remove the device drive.



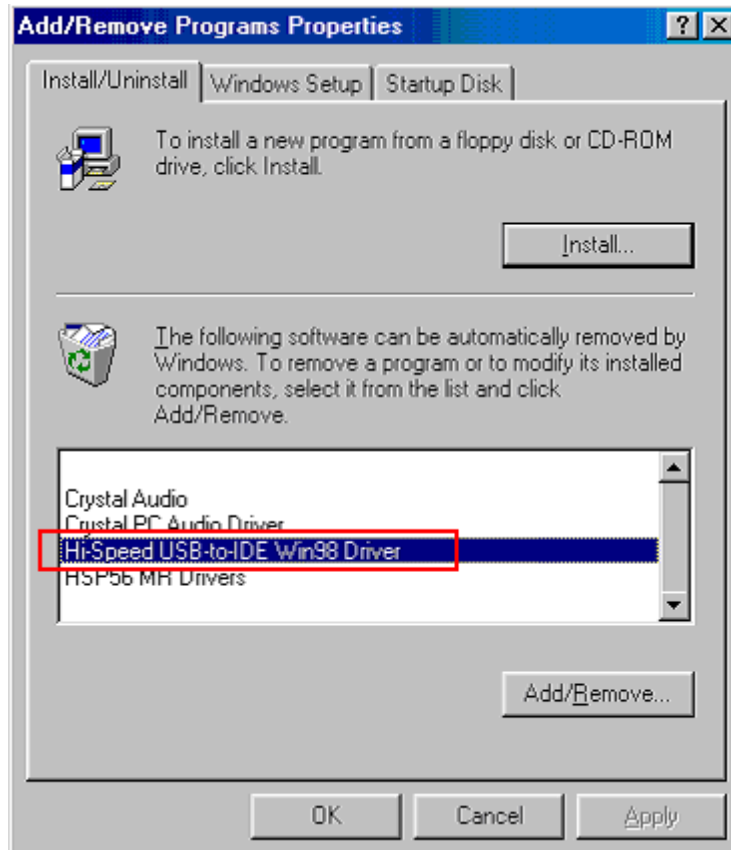
3. Once you have safely removed the device, Windows will then pop a message that the USB Mass Storage Device can now be safely removed. You can then unplug the device drive from the USB port.



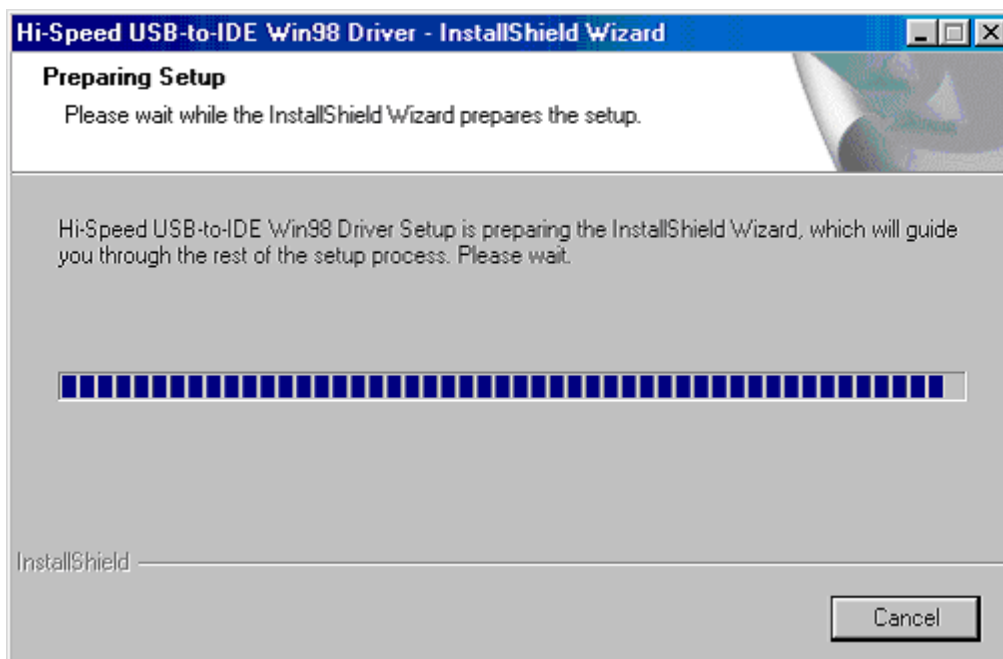
Uninstalling the Hi-Speed USB-to-IDE Win98 Driver

To uninstall the Hi-Speed USB-to-IDE Win98 Driver:

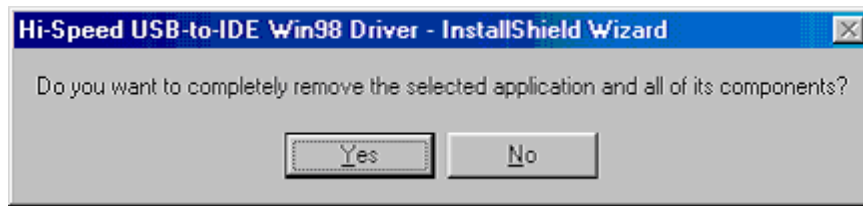
1. Go to Control Panel and double-click on Add or Remove Programs.
2. Click on Hi-Speed USB-to-IDE Win98 Driver and click the Add/Remove button.



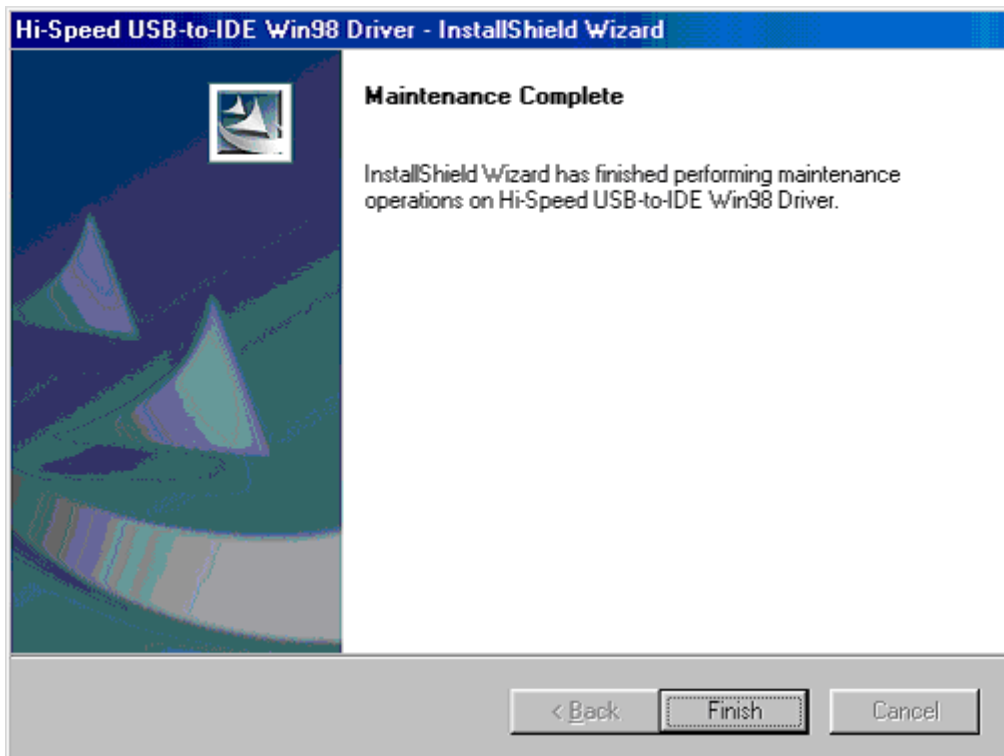
3. The InstallShield Wizard will start and will prepare the uninstall operation.



4. Before continuing, InstallShield Wizard will prompt you first whether you sure to uninstall. Click OK to continue.



5. After InstallShield Wizard has completely uninstalled the driver, it will prompt you that maintenance is complete. Click the Finish button to exit. The Win98 driver and Safe Remover utility is now uninstalled from your computer.



Disclaimer

All the information in this document is subject to change without prior notice. The manufacturer does not make any representations or any warranties (implied or otherwise) regarding the accuracy and completeness of this document and shall in no event be liable for any loss of profit or any other commercial damage, including but not limited to special, incidental, consequential, or other damages.

No part of this document may be reproduced or transmitted in any form by any means without the express written permission of the manufacturer.

All brand names and product names used in this document are trademarks or registered trademarks of their respective holders.