

MR2800-W

# Modem Card

Easy Start

Read Me First

Version 0.2

- Windows® 95, Windows® 98 are registered trademark of Microsoft Corp.
- All other company or product names are trademarks or registered trademarks or service marks of their respective owners.

### WARNING

Before installing the Modem card ensure the PC is switched OFF and the mains cord removed. If servicing the Modem card ensure the PC is switched OFF, the mains cord unplugged and the Telecommunications Line cord is disconnected from the Modem Card.

### PAN EUROPEAN APPROVAL REGULATORY NOTE

The equipment has been approved under CTR21. For such product, the following statement is required :

*“This equipment has been approved in accordance with Council Decision 98/482/EC for Pan European single terminal connection to the Public Switched Telephone Network (PSTN). However, due to differences between the individual PSTNs provided in different countries the approval does not, of itself, give an unconditional assurance of successful operation on every PSTN network termination point.*

*In the event of problems, you should contact your equipment supplier in the first instance”*

*“Dieses Geraet wurde gemaess der Entscheidung 98/482/EG des Rates europaweit zur Anschaltung als einzelne Endeinrichtung an das oeffentliche Fernsprechnetz zugelassen. Aufgrund der zwischen den oeffentlichen Fernsprechnetzen verschiedener Staaten bestehenden Unterschiede stellt diese Zulassung an sich jedoch keine unbedingte Gewaehr fuer einen erfolgreichen Betrieb des Geraets an jedem Netzabschlusspunkt dar.*

*Falls beim Betrieb Probleme auftreten, sollten Sie sich zunaechst an ihren Fachhaendler wenden.”*

*«Cet équipement a reçu l'agrément, conformément à la décision 98/482/CE du Conseil, concernant la connexion paneuropéenne de terminal unique aux réseaux téléphoniques publics commutés (RTPC). Toutefois, comme il existe des différences d'un pays à l'autre entre les RTPC, l'agrément en soi ne constitue pas une garantie absolue de fonctionnement optimal à chaque point de terminaison du réseau RTPC.*

*En cas de problème, vous devez contacter en premier lieu votre fournisseur.»*

*«La presente apparecchiatura terminale è stata approvata in conformità della decisione 98/482/CE del Consiglio per la connessione paneuropea come terminale singolo ad una rete analogica PSTN. A causa delle differenze tra le reti dei differenti paesi, l'approvazione non garantisce però di per sé il funzionamento corretto in tutti i punti di terminazione di rete PSTN.*

*In caso di problemi contattare in primo luogo il fornitore del prodotto.»*

*«Este equipo ha sido homologado de conformidad con la Decisión 98/482/CE del Consejo para la conexión paneuropea de un terminal simple a la red telefónica pública conmutada (RTPC). No obstante, a la vista de las diferencias que existen entre las RTPC que se ofrecen en diferentes países, la homologación no constituye por sí sola una garantía incondicional de funcionamiento satisfactorio en todos los puntos de terminación de la red de una RTPC.*

*En caso de surgir algún problema, procede ponerse en contacto en primer lugar con el proveedor del equipo.»*

*“Dit apparaat is goedgekeurd volgens Beschikking 98/482/EG van de Raad voor de pan-Europese aansluiting van enkelvoudige eindapparatuur op het openbare geschakelde telefoonnetwerk (PSTN). Gezien de verschillen tussen de individuele PSTN's in de verschillende landen, biedt deze goedkeuring op zichzelf geen onvoorwaardelijke garantie voor een succesvolle werking op elk PSTN-netwerkaansluitpunt.*

*Neem bij problemen in eerste instantie contact op met de leverancier van het apparaat.”*

### Network Compatibility Declaration

*This product is designed to interwork with the Public Switched Telecommunication Networks in UK, Ireland, Netherlands, Sweden, Denmark, Finland, Switzerland, Luxembourg, Belgium, France, Germany, Spain, Portugal, Iceland, Greece, Italy, Norway and Austria.*

## **NEW ZEALAND TELECOM WARNINGS**

### **General**

“The grant of a Telepermit for any item of terminal equipment indicates only that Telecom has accepted that the item complies with minimum conditions for connection to its network. It indicates no endorsement of the product by Telecom, nor does it provide any sort of warranty. Above all, it provides no assurance that any item will work correctly in all respects with another item of Telepermitted equipment of a different make or model, nor does it imply that any product is compatible with all of Telecom’s network services.”

“This equipment does not fully meet Telecom’s impedance requirements. Performance limitations may occur when used in conjunction with some parts of the network. Telecom will accept no responsibility should difficulties arise in such circumstances.”

“This equipment shall not be set up to make automatic calls to the Telecom ‘111’ Emergency Service.”

“If a charge for local calls is unacceptable, the ‘Dial’ button should NOT be used for local calls. Only the 7-digits of the local number should be dialled from your telephone. DO NOT dial the area code digit or the ‘0’ prefix.”

“This equipment may not provide for the effective hand-over of a call to another device connected to the same line.”

### **“Important Notice**

Under power failure conditions, this telephone may not operate. Please ensure that a separate telephone, not dependent on local power, is available for emergency use.”

“Some parameters required for compliance with Telecom’s Telepermit requirements are dependent on the equipment (PC) associated with this device. The associated equipment shall be set to operate within the following limits for compliance with Telecom’s Specification :-

1. (a) There shall be no more than 10 call attempts to the same number within any 30 minute period for any single manual call initiation, and  
(b) The equipment shall go on-hook for a period of not less than 30 seconds between the end of one attempt and the beginning of the next attempt.
2. Where automatic calls are made to different numbers, the equipment shall go on-line for a period of not less than 5 seconds between the end of one attempt and the beginning of the next attempt.
3. The equipment shall be set to ensure that calls are answered between 3 and 30 seconds of receipt of ringing.”

“All persons using this device for recording telephone conversations shall comply with New Zealand law. This requires that at least one party to the conversation is to be aware that it is being recorded. In addition, the Principles enumerated in the Privacy Act 1993 shall be complied with in respect to the nature of the personal information collected, the purpose for its collection, how it is used and what is disclosed to any other party.”

## About this Easy Start

This booklet contains information on setting up your MR2800-W modem card. It touches on the key installation procedures and allows you to setup your modem within minutes!

Static electricity can cause permanent damage to your card. You have to ground yourself during the installation by touching any non-painted surface of the computer's chassis every minute or so.



*Power off your computer and any connected devices before connecting your modem card!*

## Setting up Your Modem Card

Please carry out the following steps **BEFORE** installing your modem card.

**MR2800-W modem has to be first configured as either a Primary or Secondary device.**

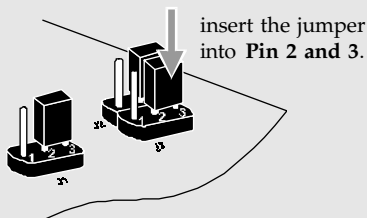
To determine the choice of configuration, check your motherboard specifications for **AC'97 Audio Controller**.

If AC'97 Audio Controller is present, configure your modem as a **Secondary** device, **else** it should be configured as a **Primary** device.

- i) Next, make sure that the option **AC'97 Modem Controller** is set **Enabled** in your system BIOS. (Refer to your system's manual for BIOS Setup details.)

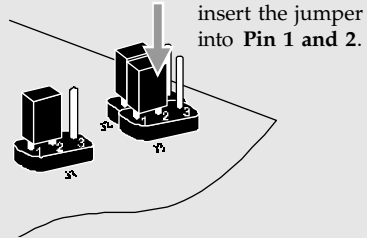
**For configuration as a Primary device:**

- ii) **AC'97 Audio Controller** must be **disabled** in your system. (Refer to your system's manual for BIOS Setup details)
- iii) On your card, short **Pin 2 and 3** on **J1, J2 and J3**.



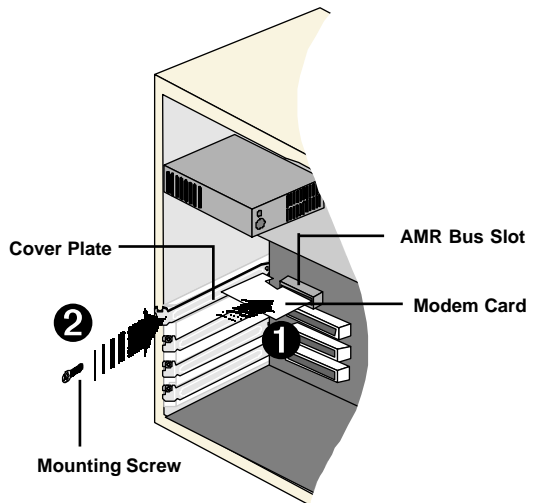
**For configuration as a Secondary device:**

- ii) To configure the card as a **Secondary** device, **AC'97 Audio Controller** must be **enabled** in your system. (Refer to your system's manual for BIOS Setup details.)
- iii) On your card, short **Pin 1 and 2** on **J1, J2 and J3**.

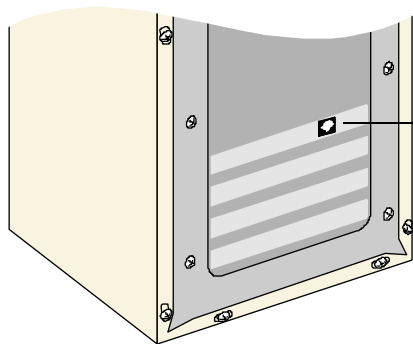


## Installing the Modem Card

- ❶ Insert the modem card firmly into the AMR Bus slot.
- ❷ Secure the modem card with a mounting screw.



## Connecting the Modem Card

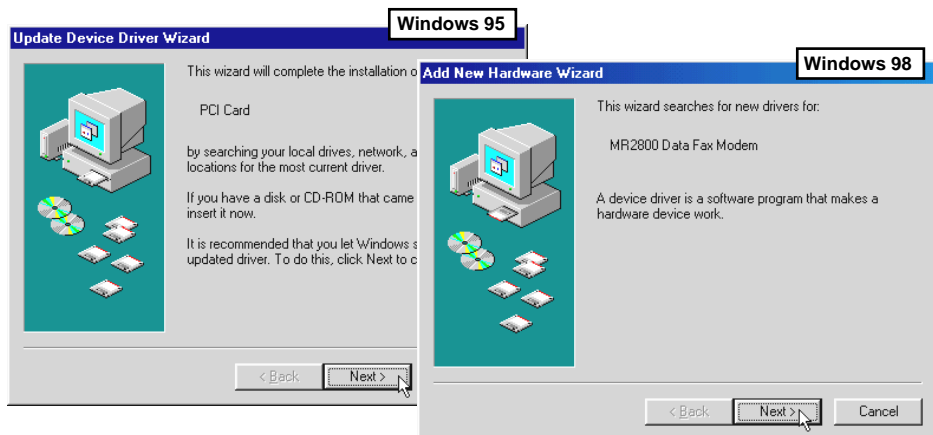


LINE - to Telephone Wall Socket

Connect one end of the **telephone extension cable** to the **modem card** and the other end to your **telephone wall socket**.

## Installing the Modem Driver in Windows®95/98

1. Start Windows® 95/98. Windows® 95/98 will detect the newly-installed modem card and prompts for its driver.
2. Insert the **Installation CD** into CD-ROM drive and click **Next**.



## For Windows® 95:

- > System will now prompt you that your modem driver has been detected. Click **Finish**.

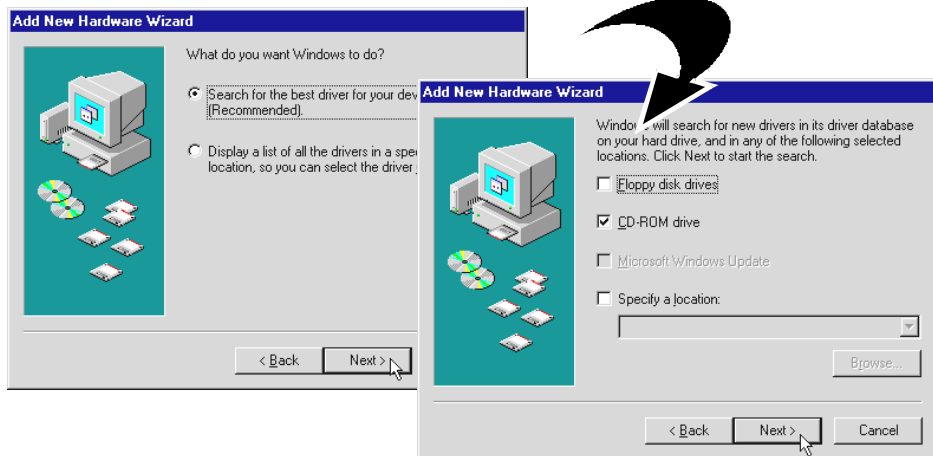


- > Upon system prompt for Installation CD, check that your Installation CD is in your CD-ROM drive click **OK**.
- > From the **Copying Files...** dialog box, type "D:\\" in the text box and click **OK**. (Assuming you have placed the Installation CD in your CD-ROM Drive D. Else, substitute the drive letter accordingly.)

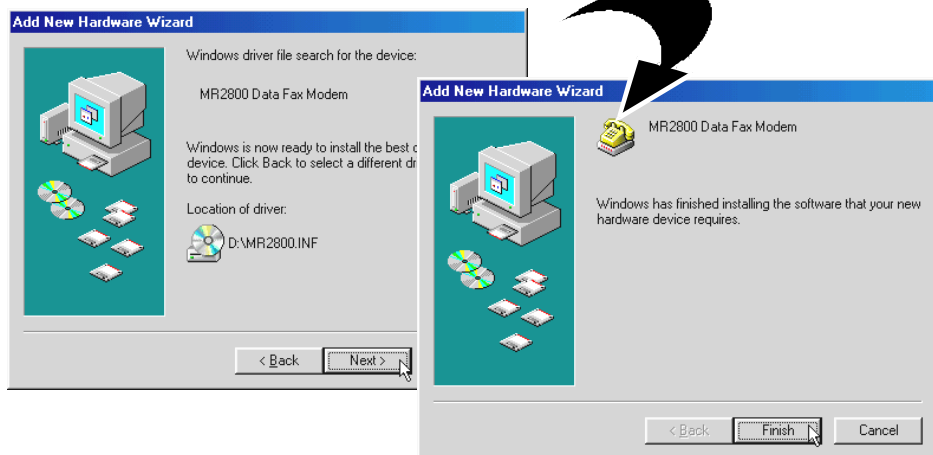
Follow the on-screen instructions to complete the driver installation.

## For Windows® 98:

- > Click the option '**Search for the best driver for your device. (Recommended).**' and click **Next**.
- > At the next prompt, select the source of your driver.  
Click the option '**CD-ROM drive**' and click **Next**.



- > Click **Next** again to install the driver.
- > To complete the driver installation, click **Finish** and restart your system, if prompted.





## Testing the Modem Card in Windows® 95/98

1. From the Windows task bar, click **Start > Settings > Control Panel**.

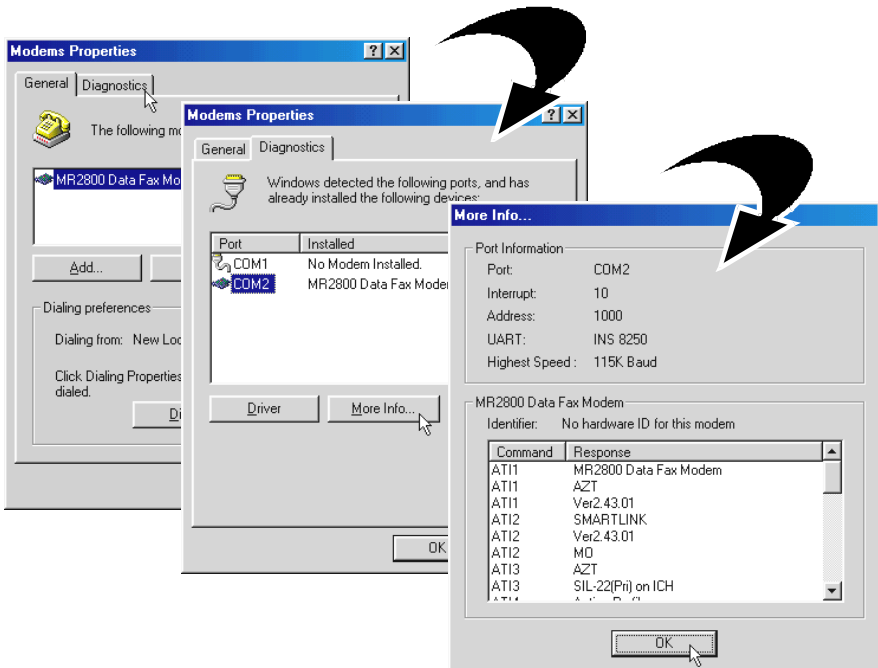
2. Double-click the  **(Modems)** icon.

3. Click the **Diagnostics** tab.

4. Select the **Modem** device. Click **More Info...** option.


The **More Info...** window will appear, showing a list of AT commands. This means that your modem is now ready to run. Click **OK**.

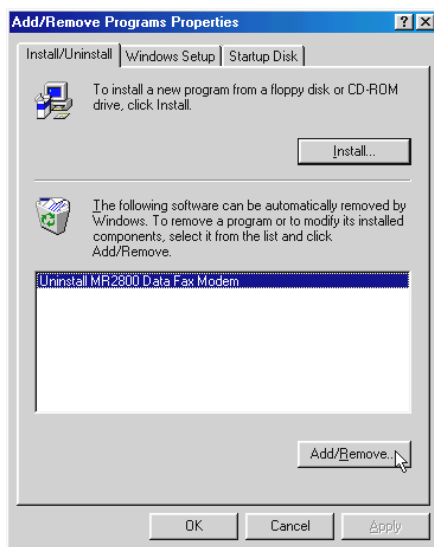
*(If your modem is not installed properly, the set of AT commands will not be listed. You may also be prompted by an error message, stating that it was unable to open the COM port. If this happens, re-install the modem driver. See the next section to un-install the driver)*



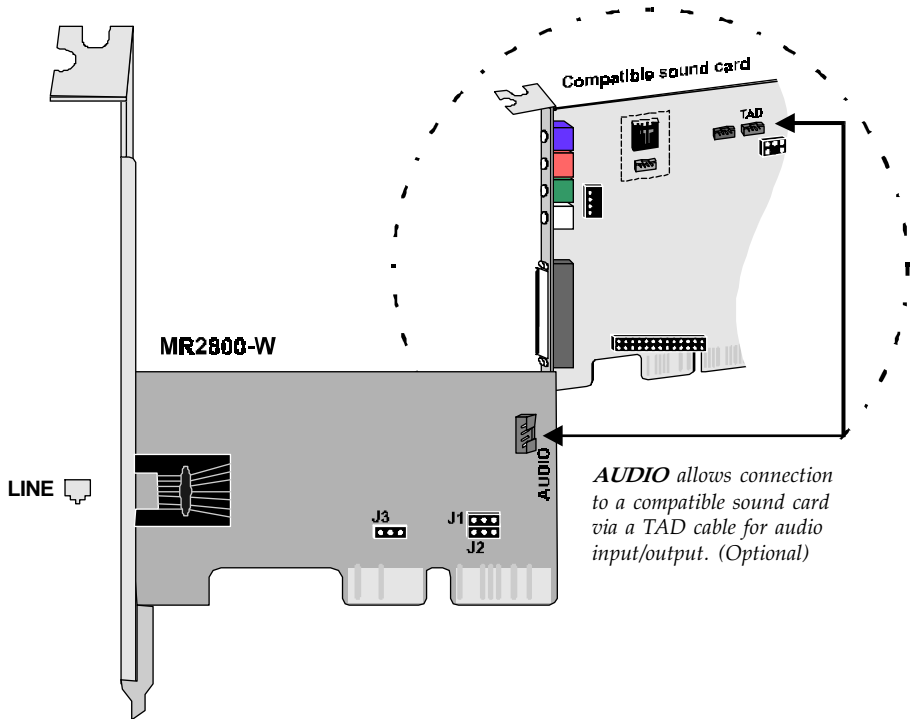
## Un-installing the Modem Driver in Windows®95/98

1. From the Windows taskbar, click **Start** > **Settings** > **Control Panel**.

2. Double click  (**Add/Remove Programs**) icon.
3. Click on "**MR2800 Modem Uninstall**" and click **Add/Remove**.
4. Follow any on-line instructions to remove the modem driver.



## Card Layout



*This page is intentionally left blank.*