



User Manual

Version 3.00

RAMOS Technology Co., Ltd.

Contents

1. Before you start	Page 3
2. How to install the RunDisk Windows Driver S/W	Page 5
- installing with setup program	
- installing with INF file	
3. How to remove the RunDisk Windows Driver S/W	Page 7
4. How to use the RunDisk	Page 8
5. How to remove the RunDisk	Page 9
6. How to use the RunDisk Write Protect Switch	Page 10
7. How to use the RunDisk Manager S/W	Page 11
- Format the RunDisk	
- Using password	
- Make Bootable Disk	
8. How to use the RunDisk in Macintosh, I-Mac.....	Page 14
9. How to use the RunDisk in Linux.....	Page 15

Before you start

Thank you for choosing the RunDisk.

Please read carefully this User Manual before you start to use the RunDisk.

● Caution ●

- Back-up your important data regularly.
(RAMOS is not responsible for the data loss by user)
- Keep the RunDisk away from humidity, high temperature and water ,etc.
- Keep the RunDisk away from static electricity, magnets, etc.
- Handle with care – do not drop or strike against other object.
- Ensure the PC connecter of RunDisk clean.
- Damage caused by disassembling or modifying the RunDisk is not covered by the warranty.
- Do not remove the RunDisk during writing or reading. It may cause data loss.
(LED indicator is red while the RunDisk is reading or writing)
- Run 'Safely Remove Hardware' before removing the RunDisk from PC.
(Refer to Page 8. 'How to remove the RunDisk')

● System Requirements ●

- IBM compatible computer with AMD or Intel Pentium CPU(100MHz or higher)
- Minimum 32MB Main Memory(64MB is recommended)
- USB 1.1 port or higher
- CD-ROM Drive(for S/W installing)
- Operating System
 - : Microsoft Windows Series (98, 98SE, ME, 2000, XP or higher)
 - : Mac OS 9.x or higher
 - : Linux 2.4.x or higher

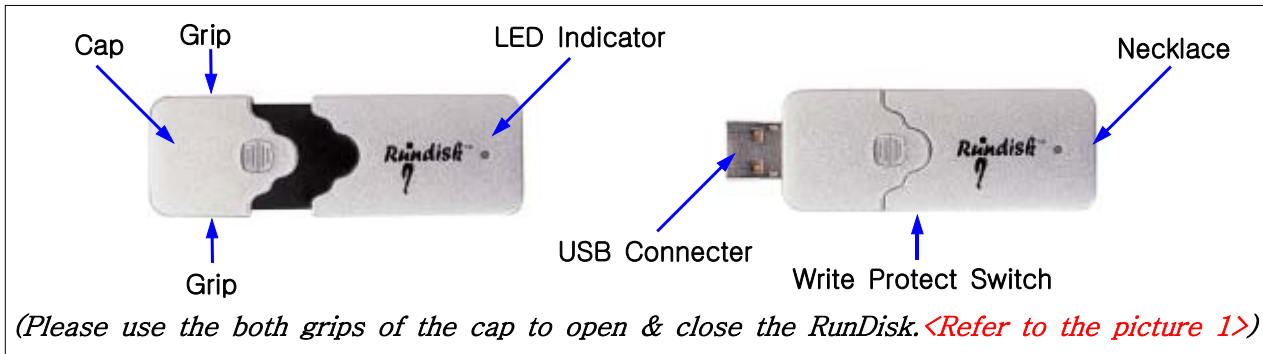
● Product Components ●

- RunDisk, Extension Cable, Driver & Manual CD, installing Manual and Necklace

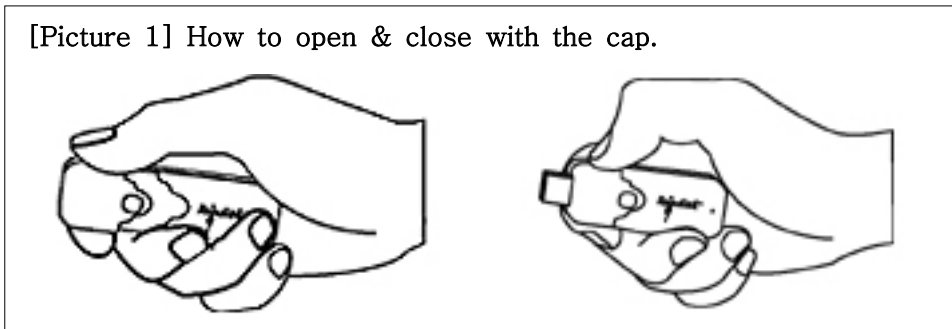
● Detailed Part Description ●

► For better performance, the standard and the design of our products can be changed without notification .

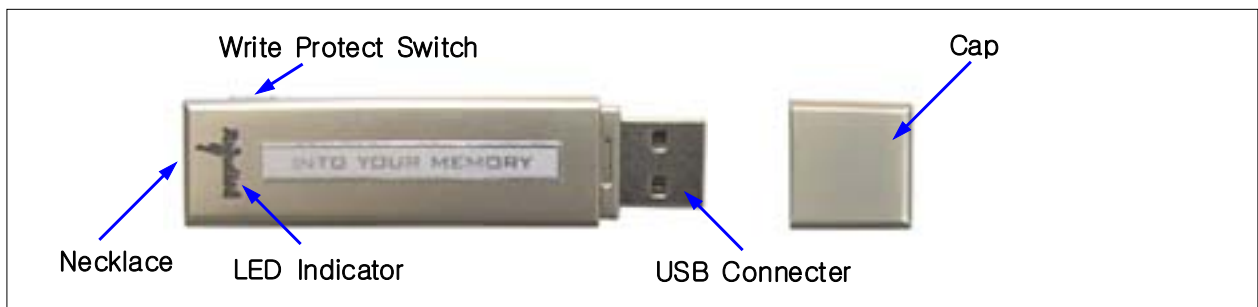
1) RUN-UR01



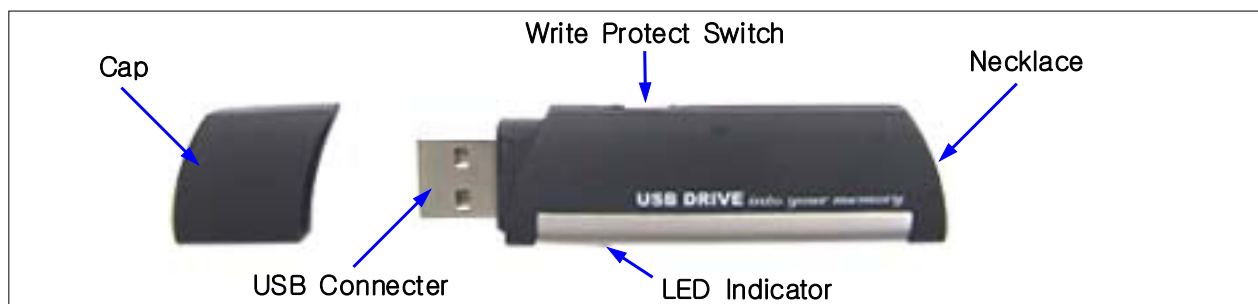
[Picture 1] How to open & close with the cap.



2) RUN-UR02



3) RUN-UR03



How to install the RunDisk Windows Driver S/W

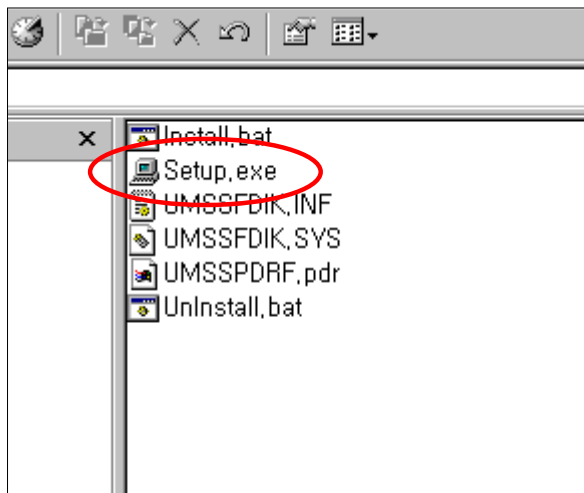
You need to install the driver S/W to use the RunDisk in Windows 98.

You can use the RunDisk without installing in Windows ME, 2000, XP.

▶ The User Manual shows Windows 98SE pictures, so it may be different with yours.

installing with setup program

1. Run 'Setup.exe' in 'RunDisk\English\98Driver' folder inside the CD.



2. Click '98 Driver Install' in the dialog box 'Driver Install'.



3. 'Plug In' message will appear after installing. Click 'OK' and use the RunDisk.
(Please plug in the RunDisk again.)



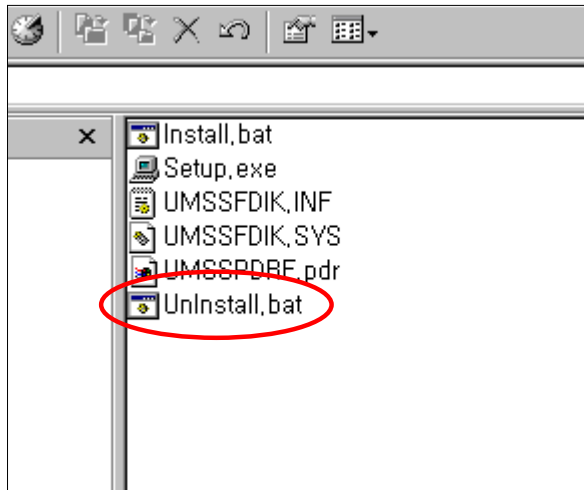
installing with INF file

1. You can install the driver with INF file when you can not install with setup program.
2. Click 'Next' in the dialog box 'Add New Hardware Wizard'.
3. Select 'Search for the best driver for your device' and click 'Next'.
4. Select 'Specify a location' and click 'Browse'.
Set path 'RunDisk\English\98Driver' in CD-ROM and click 'Next'.
(CD must be in the CD-ROM)
5. Click 'Next' when windows is ready to install.
6. Click 'Finish' when windows has finished installing.

How to remove the RunDisk Windows Driver S/W

You can remove the driver S/W when you don't need the RunDisk anymore.

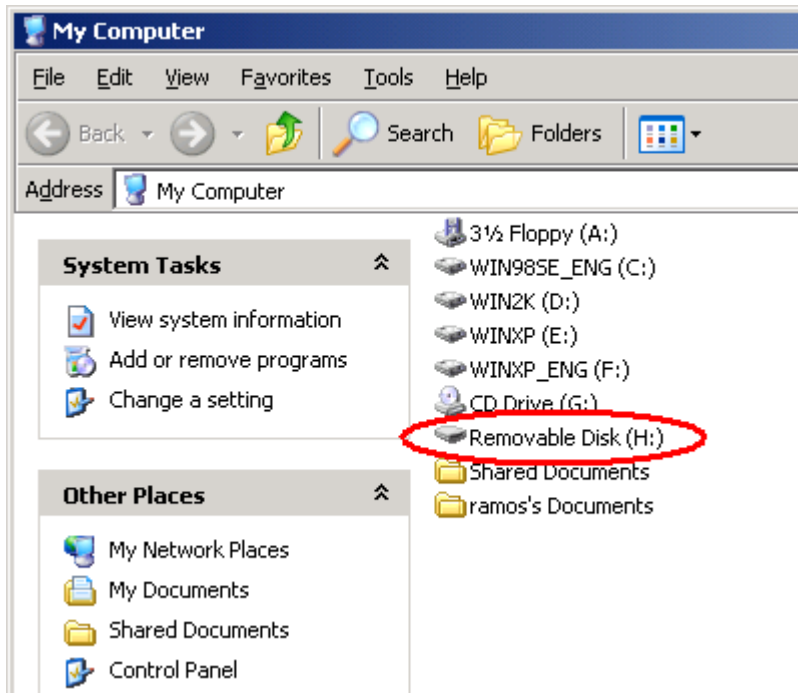
1. Run 'Uninstall.bat' in 'RunDisk\English\98Driver' folder inside the CD.



2. The RunDisk will not work after removing the driver.
Install the driver again if you want to use the RunDisk.

How to use the RunDisk

After installing, you can find "Removable Disk" in "My Computer" or "Windows Explorer".
Then you can use the RunDisk same as hard-disk.



How to remove the RunDisk

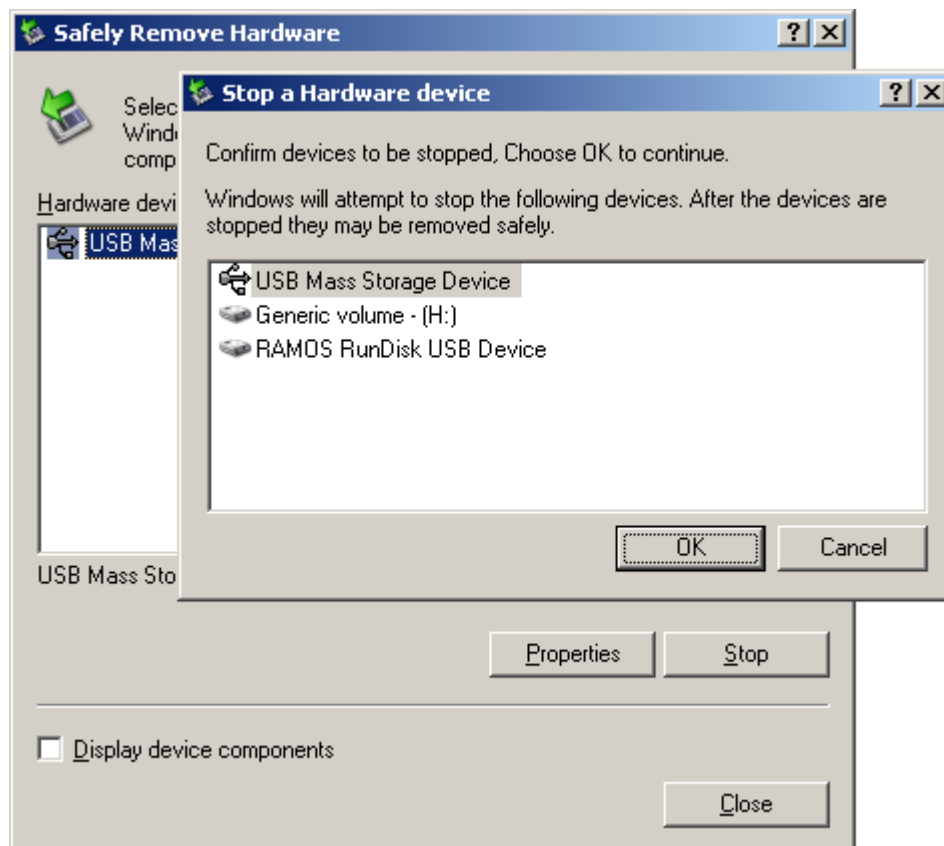
When you want to remove the RunDisk, please run 'Safely Remove Hardware' first. Or your data may be lost.

- ▶ In Windows 98 and Windows98SE, you don't need to run.
- ▶ Do not remove the RunDisk during writing or reading. It may cause data loss.
(LED indicator is red while the RunDisk is reading or writing)

1. Run 'Safely Remove Hardware' on tray icon.



2. Select the 'USB Mass Storage Device', and click 'Stop'.
Click 'OK' button in the next dialog box.



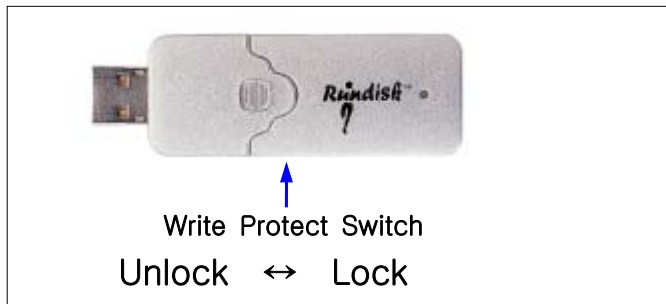
How to use the RunDisk Write Protect Switch

The RunDisk has Write Protect Switch to prevent missing important data.

Please 'Unlock' Write Protect Switch after you save important data to the RunDisk.

► Please plug-out the RunDisk from PC before moving Write Protect Switch.

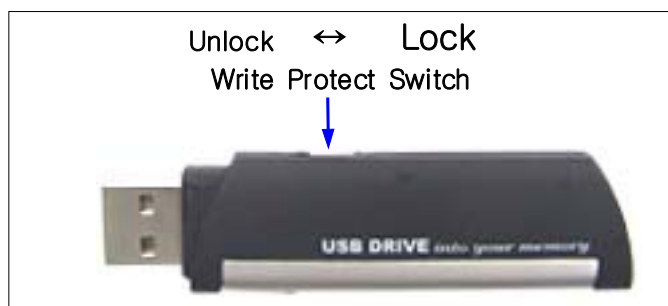
1) RUN-UR01



2) RUN-UR02



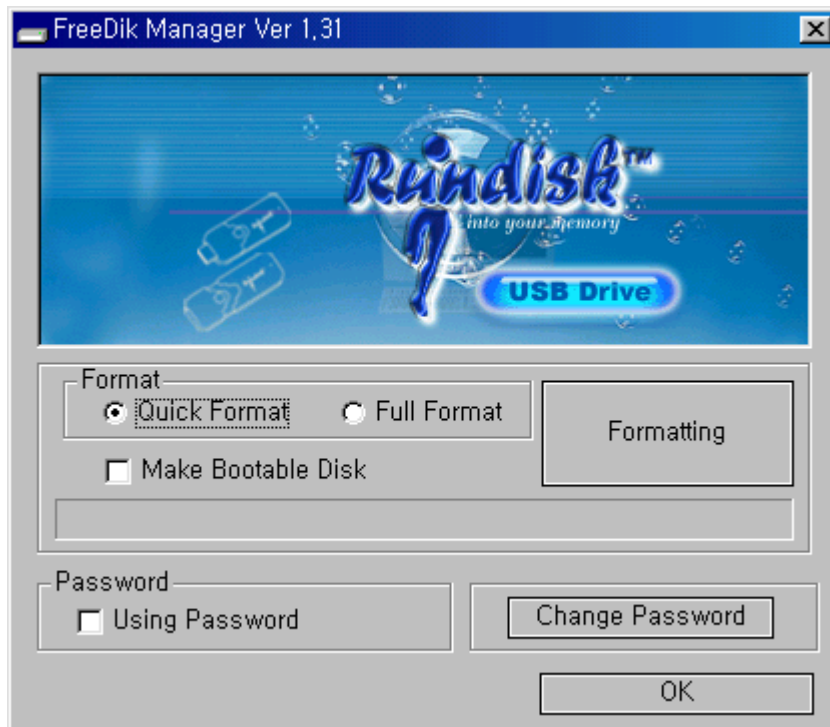
3) RUN-UR03



How to use the RunDisk Manager S/W

The RunDisk supplies a powerful format program. You can make it have such various functions as disk-format, password, etc by using this program.

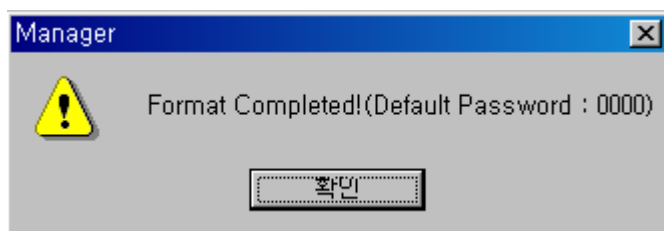
Run 'Manager.exe' in 'RunDisk\English\Application' folder inside the CD.



Format the RunDisk

You can reset the RunDisk when you forget the password or want to delete all files.

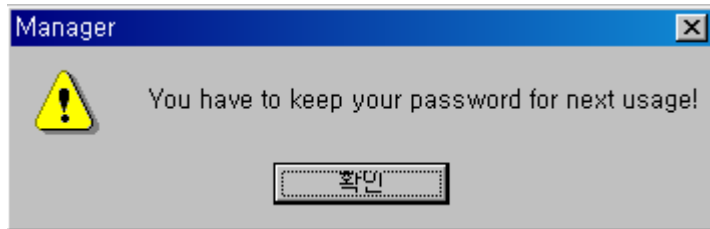
1. Select format type and click 'Formatting'.
 - Quick Format : to format the disk 'Quick'
 - Full Format : to format the disk 'Full'
2. Click 'OK' after formatting.(Default password is '0000')



Using password

You can lock the RunDisk by setting password.

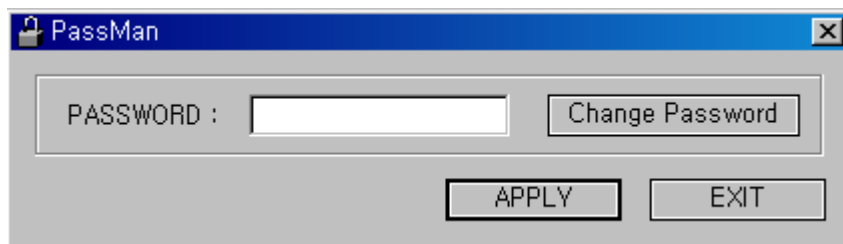
1. Click 'Using Password' and you can use password.



2. Click 'Using Password' again when you want to disable password.



3. After setting password, you can see 'PassMan.exe' in removable disk when you plug in the RunDisk. Run 'PassMan.exe' and enter correct password. Click 'APPLY' and use the RunDisk.



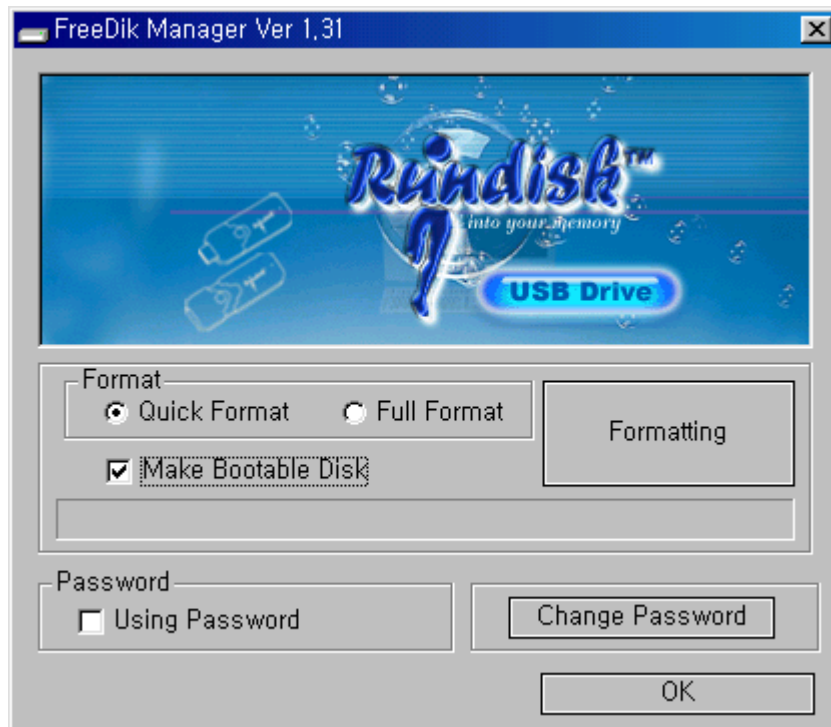
4. To change password, use 'Change Password' in 'Manager.exe' or 'PassMan.exe'

Make Bootable Disk

You can use the RunDisk as a booting disk.

- ▶ You can make it only in Windows98, Windows98SE and WindowsME.
- ▶ Booting is possible only that the PC supports 'USB-ZIP' booting mode on the CMOS of the mainboard.
- ▶ You have to cancel the password function when you want to use it as a booting disk.
- ▶ You have to back up your important data. All saved data will be deleted when you make the RunDisk as a booting disk.

1. Check 'Make Bootable Disk'. then you can make a booting disk by running format.



2. After that, the files for the booting of the RunDisk will be copied.

3. With the RunDisk on a PC, Please set up the booting to 'USB-ZIP' on the CMOS.
Then, after you supply the power, the booting will be possible.

How to use the RunDisk in Macintosh, I-Mac

The RunDisk supports Macintosh or I-Mac system. Please follow the instruction below.

- ▶ Only possible in MacOS 8.6 or higher.
- ▶ You can not use the RunDisk in Macintosh or I-Mac with password function.

1. Connect the RunDisk to USB Port.
2. The RunDisk is read as 'NO_NAME' disk, then you can use as like hard-disk.
3. Send the disk icon into 'Trash' to prevent loss of data before removing the RunDisk.
(It's called 'Unmount')

How to use the RunDisk in Linux

The RunDisk supports Linux system. Please follow the instruction below.

- ▶ This is for RedHat Linux 7.3, it may be different with yours.
- ▶ You can not use the RunDisk in Linux with password function.
- ▶ To prevent any possibilities of data loss or system error,
Do unmount before removing the RunDisk in Linux.

1. If you plug the RunDisk on PC, the system will show the message like below.

```
[root@localhost root]# usb.c: USB device 2 (vend/prod 0x102a/0x1) is not claimed by any
active driver.                                -> The USB device number '2' may be different.
Vendor:          Model:          Rev:
Type:   Direct-Access          ANSI SCSI revision: 02
```

2. Enter 'ls /proc/scsi', 'cat /proc/scsi/scsi' to confirm SCSI device.

```
[root@localhost root]# ls /proc/scsi
scsi  usb-storage-0
[root@localhost root]# cat /proc/scsi/scsi
Attached devices:
Host: scsi0 Channel: 00 Id: 00 Lun: 00
Vendor: RAMOS   Model: RunDisk       Rev: 1.00
Type:   Direct-Access          ANSI SCSI revision: 02
```

3. Mount the RunDisk like below.

```
[root@localhost root]# mkdir /mnt/rundisk          -> Make folder for scsi device
[root@localhost root]# mount /dev/sda1 /mnt/rundisk/ -> Mount scsi device
Attached scsi removable disk sda at scsi0, channel 0, id 0, lun 0
SCSI device sda: 256000 512-byte hdwr sectors (131 MB)
sda: Write Protect is off
```

4. Do unmount the RunDisk like below.

```
[root@localhost root]# umount /mnt/rundisk/        -> Do unmount
[root@localhost root]# umount /mnt/rundisk/        -> Confirm 'umount'
umount: /mnt/rundisk/: not mounted
```