

## ■ Install drivers in Windows 98SE

The USB 2.0 PCI card has 3 USB host controller engines in the chip. Two of the Open Host Controller engines handle USB 1.1 transactions. One of the Enhanced Host Controller engine handles the USB 2.0 Hi-speed transactions. When you install the PCI card, Windows will automatically detect and ask for install "NEC USB Open Host Controller" driver two times, then complete "NEC PCI to USB Enhanced Host Controller" driver installation.

Before you going to install the card, please prepare a Windows 98SE CD-ROM and EHCI driver diskette, then follow the steps to complete the installation procedure.

1. After your computer boot up, the Windows 98 will automatically detect a **"NEC USB Open Host Controller"**. Click "Next".
2. Select the **"Search for the best driver for your device."** button and click "Next".



1

3. Unclick all boxes and click "Next".



4. Windows has found an updated driver for this device. Choose the recommended box and click "Next".



2

5. Dialog box showing that it's ready to install the best driver for the device. Click "Next". Then the files should automatically load from window driver database in several seconds. If your system without the driver database, Windows will prompt to insert your Windows 98 CD-ROM for load a relative file.



6. After "Windows has finished installing the software that your new hardware device requires" dialog appears. Click "Finish".



7. Repeat the above process for install the second NEC USB Open Host controller.

3

8. After you have installed the two NEC USB Open Host Controllers, Windows will find a "PCI Universal Serial Bus" device. Click "Next" to continue.



9. Select the "Search for the best driver for your device." button and click "Next".

10. Another dialog will appear. Check the "Floppy disk drives" box and uncheck all other options in the windows and insert the EHCI driver diskette that come with the package into your floppy drive. Click "Next".



4

11. Choose the recommended box and click "Next".



12. The "Windows driver file search for the device" dialog appears with the location of the driver. Click "Next" to continue.



5

13. The "Windows has finished installing the software that your new hardware device requires" dialog appears. Click "Finish".



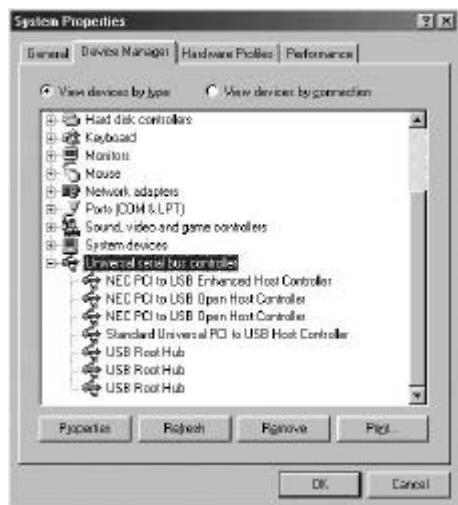
14. Restart Windows and apply your USB peripheral devices.

### ■ Verify if PCI card has properly installed

To confirm that the USB 2.0 Hi-speed PCI card has been correctly installed, check your Device Manager on the Windows system. You should see an entry titled **“Universal Serial Bus Controller”** click on the “+” sign for next sub- entry should reveal the following added readings:

**NEC PCI to USB Enhanced Host Controller**  
**NEC PCI to USB Open Host Controller**  
**NEC PCI to USB Open Host Controller**  
**USB Root Hub**  
**USB Root Hub**

6



**Note:**

All the driver installation steps may be a little different from this guide when you had been installed this card before or using different version of O.S., in this situation please follow the Windows prompt steps to complete the installation procedure.

- END -