



Installation Guide

1 Overview

Obtain comprehensive system hardware and software information quickly and easily through SysProbe's easy to navigate GUI interface. Information available at your fingertips includes system capabilities as well as complete operational and installation status of hardware system components.

2 Installation

Execute "SysProbe.exe" and the main window will appear, as shown in Figure 1. You can click on the "+" symbol preceding a type name to see more detailed information.

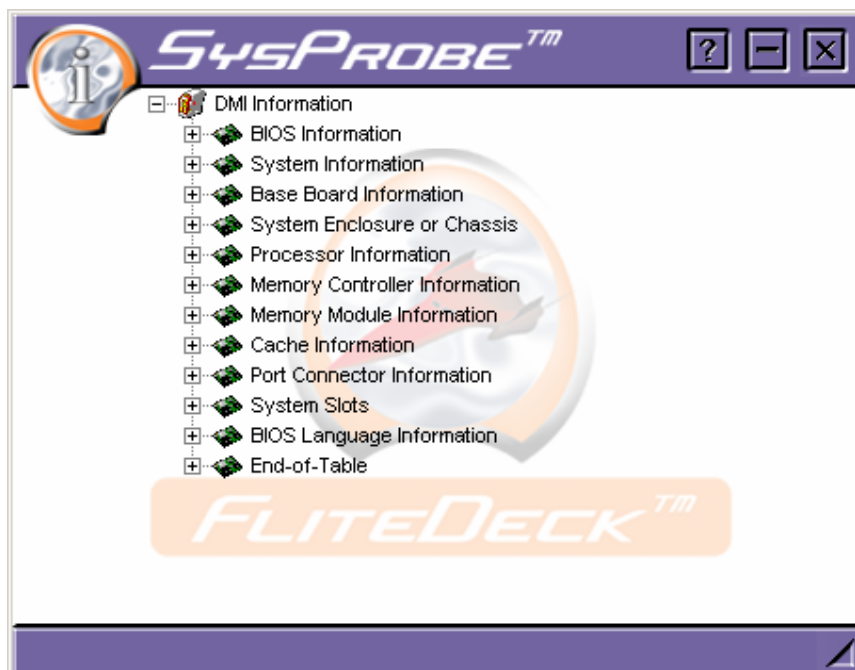


Figure 1

2.1 BIOS Information

This information includes BIOS vendor name, version, starting address segment, release date, ROM size and BIOS characteristics (See Figure 2).



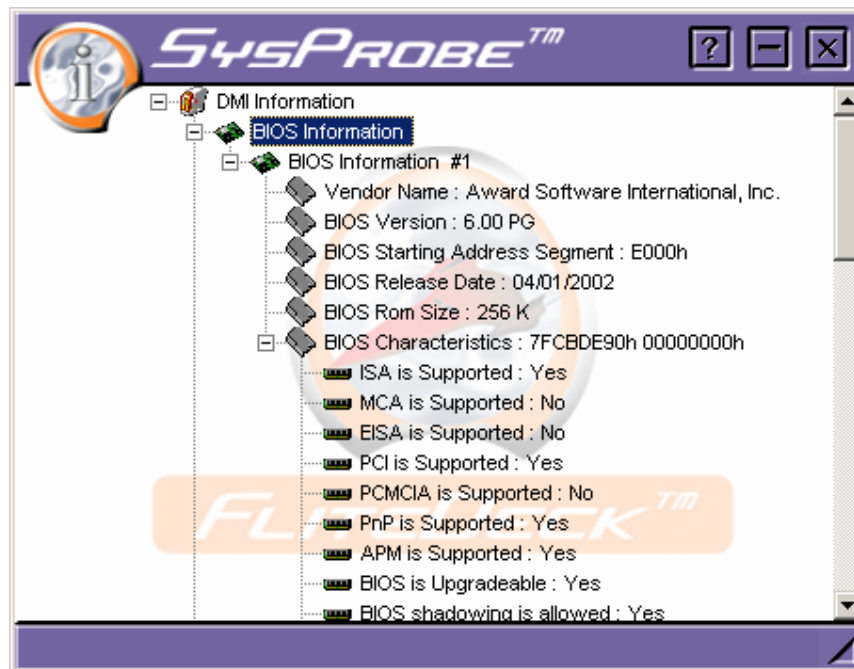


Figure 2

2.2 Base Board Information

This includes information on mainboard manufacturer, product model name, version and serial numbers (See Figure 3).

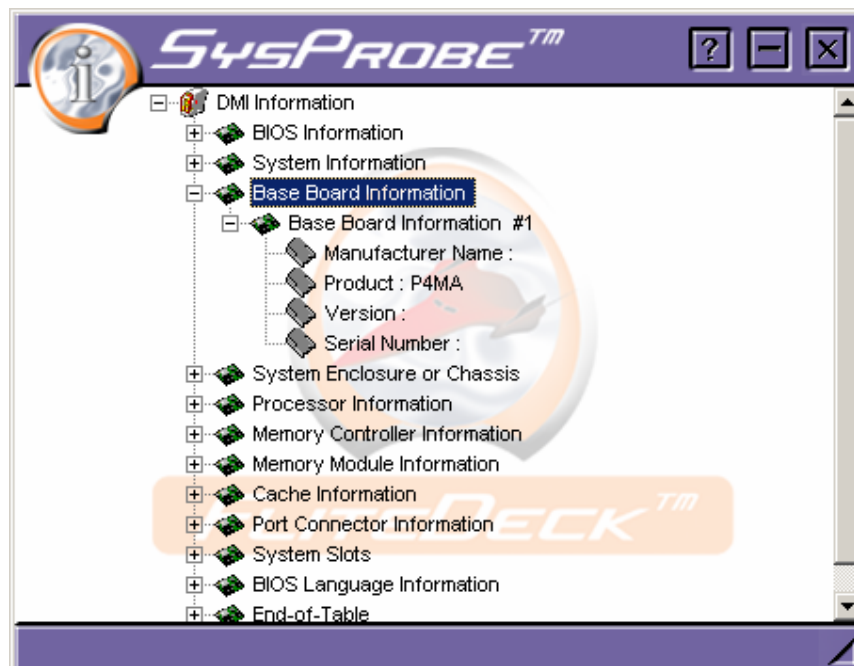


Figure 3

2.3 Memory Controller Information

Information displayed includes error detecting and correcting capability, interleave information, memory size, speed, types, and voltage (See Figure 4).

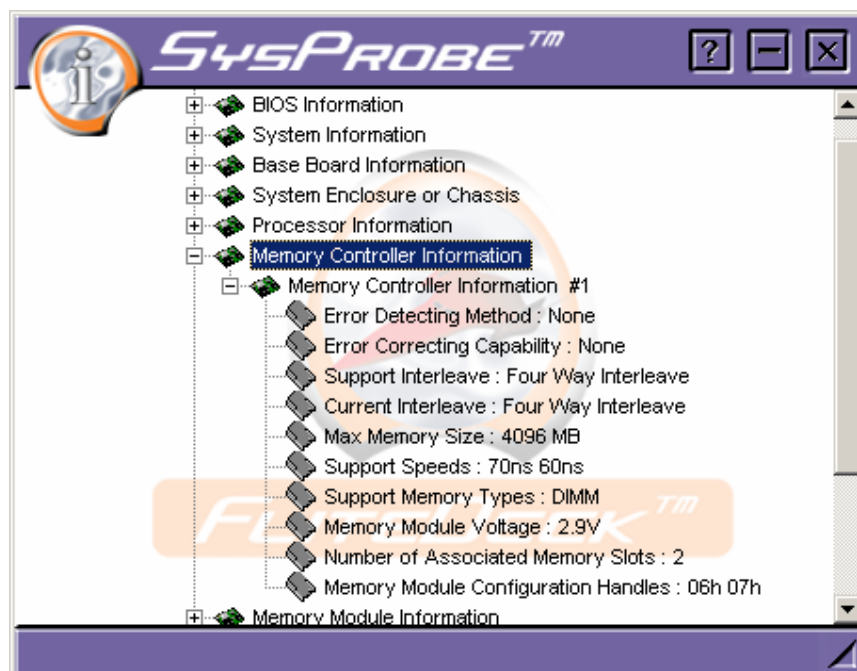


Figure 4

2.4 Memory Module Information

This section includes information on memory module socket designation, bank connections, current speed, current memory type, installed size and enable size (See Figure 5).

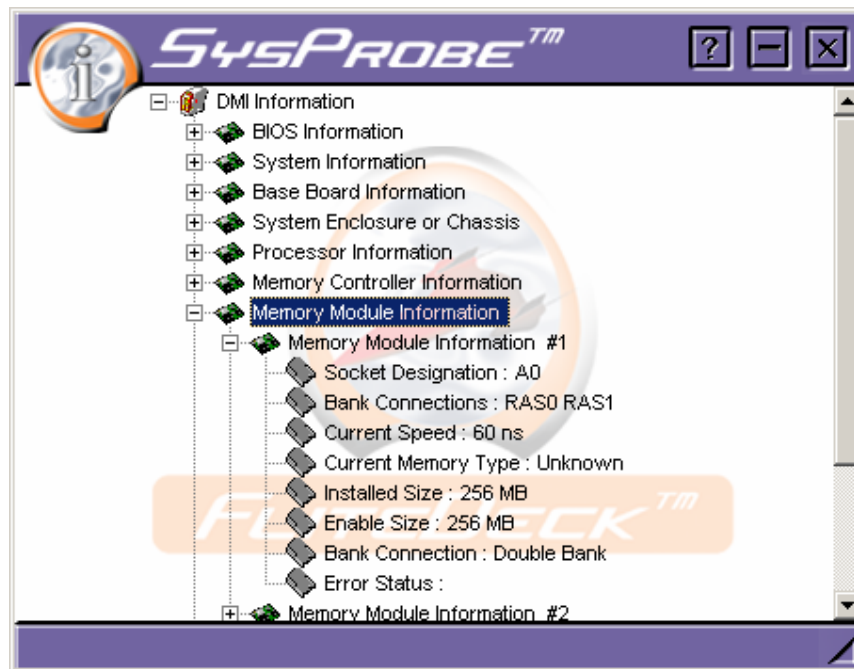


Figure 5

2.5 Processor Information

Listed information includes CPU socket designation, processor type, processor family, manufacturer, ID, version, voltage, external clock, max speed, current speed, status, upgrade, serial number and cache (See Figure 6).

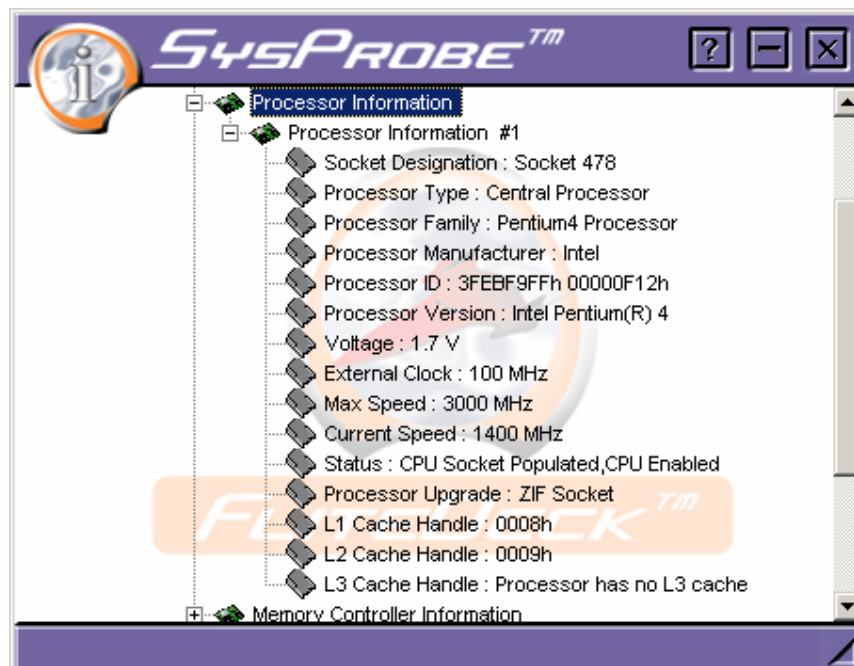


Figure 6



Installation Guide

2.6 Other Information

Additional information about system enclosure, chassis, cache, port connection, system slot, BIOS language, and more, is also available.

Note: VIA has made every effort to ensure the accuracy of the content of this manual. However, it is possible that it may contain technical inaccuracies or typographical or other errors.

VIA will assure no liability for any inaccuracy found in this publication, nor for damages, direct, indirect, incidental, consequential or otherwise, that may result from such an inaccuracy, including without limitation loss of data or profits.

VIA provides this manual "as is", and does not issue a warranty of any kind, express or implied, including without limitation implied warranties of merchantability or fitness for a particular purpose.

VIA reserves the right to amend the design without prior notice and does not guarantee absolute accordance with the actual product. Please contact the local retailers if any additional information is needed.

