

PCI 2 Port Fast Serial/ 1 Port EPP Combo Card

PCI 2 Port Fast Serial / 1 Port EPP Combo Card User Manual

Product Features :

- PCI compatible dual UART
- 16 byte transmit-receive FIFO (UART)
- 16 byte FIFO (Parallel)
- Programmable baud rate generator
- Modem control signals
- 5, 6, 7, 8 bit characters selection
- Even, odd, no parity, or force parity generations
- Status report capability
- Compatible with 16C550
- Multi-mode compatible controller(SPP, PS2, EPP, ECP)
- Re-map function for legacy ports
- Fast data rates up to 1Mbytes/s (Serial Port)
- Fast data rates up to 1.5Mbytes/s (Parallel Port)
- Software programmable mode selects
- Microsoft compatible

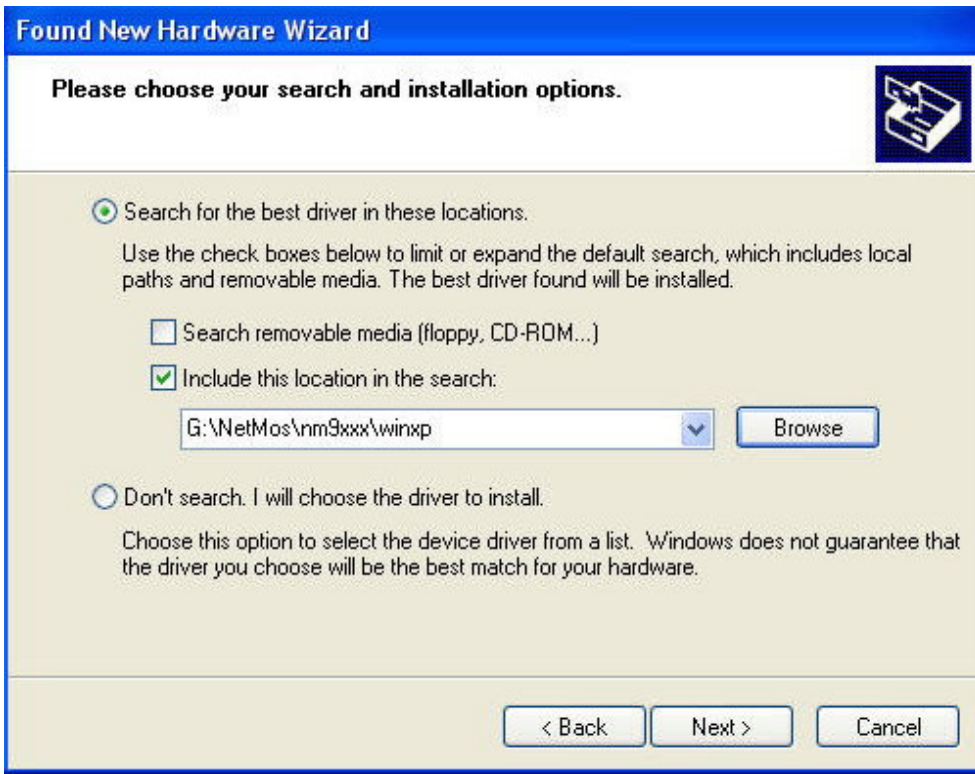
Driver Installations (Windows XP)

1. Power off the computer.
2. Install the PCI Card in a PCI slot.
3. Power on the computer and let the operating system detect the Card.
4. Choose “Install from a list or specific location (Advanced)”, then press Next button.

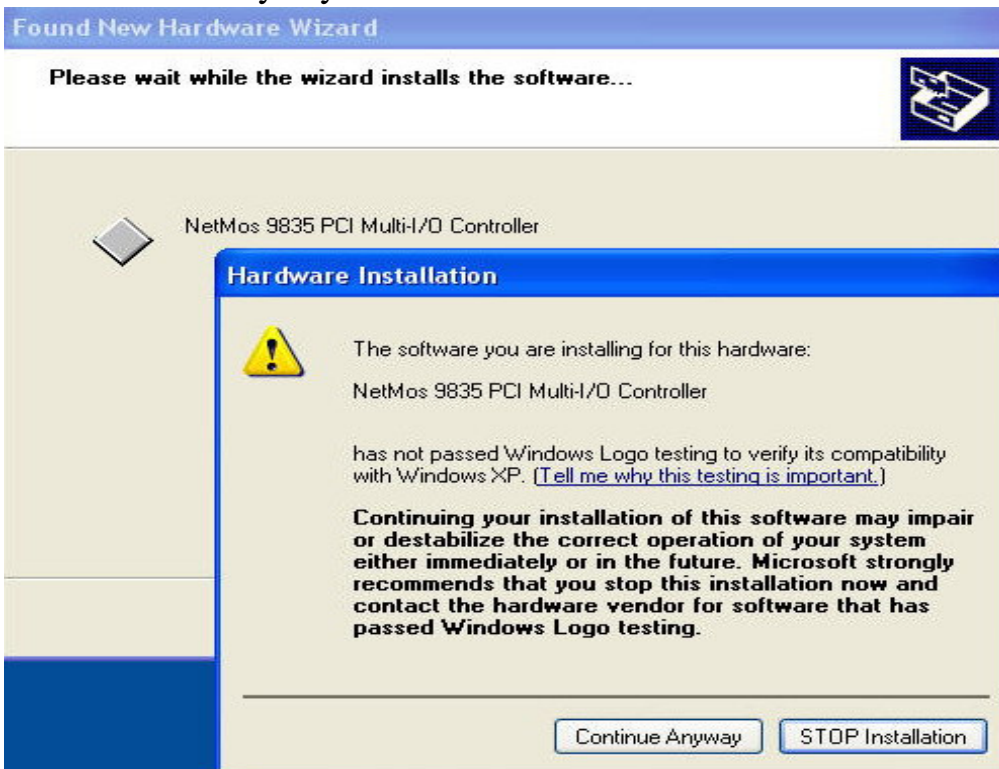


PCI 2 Port Fast Serial/ 1 Port EPP Combo Card

5. Choose “Search for the best driver in these locations.” and enter the directory “NM9XXX\WINXP” of the CD Drive, then press Next button.



6. Windows will detect “NetMos 9835 PCI Multi-I/O Controller”, press the Continue Anyway button.



7. Please click “Finish” button to end the driver installation.

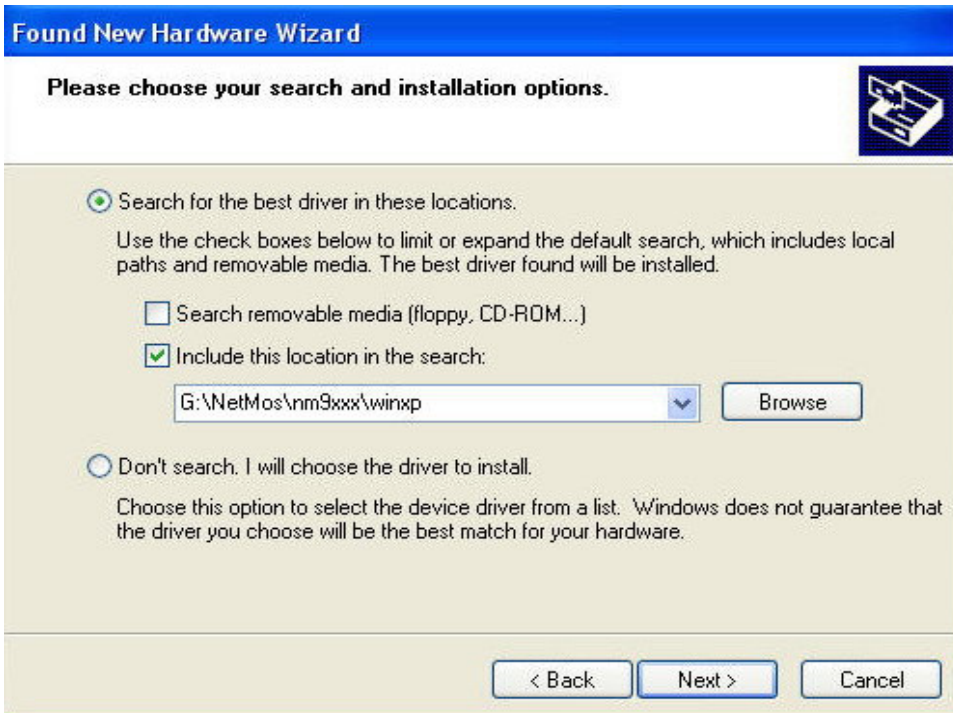


8. Windows will detect “NetMos PCI ECP Parallel Port”. Choose “Install from a list or specific location (Advanced)”, then press Next button.

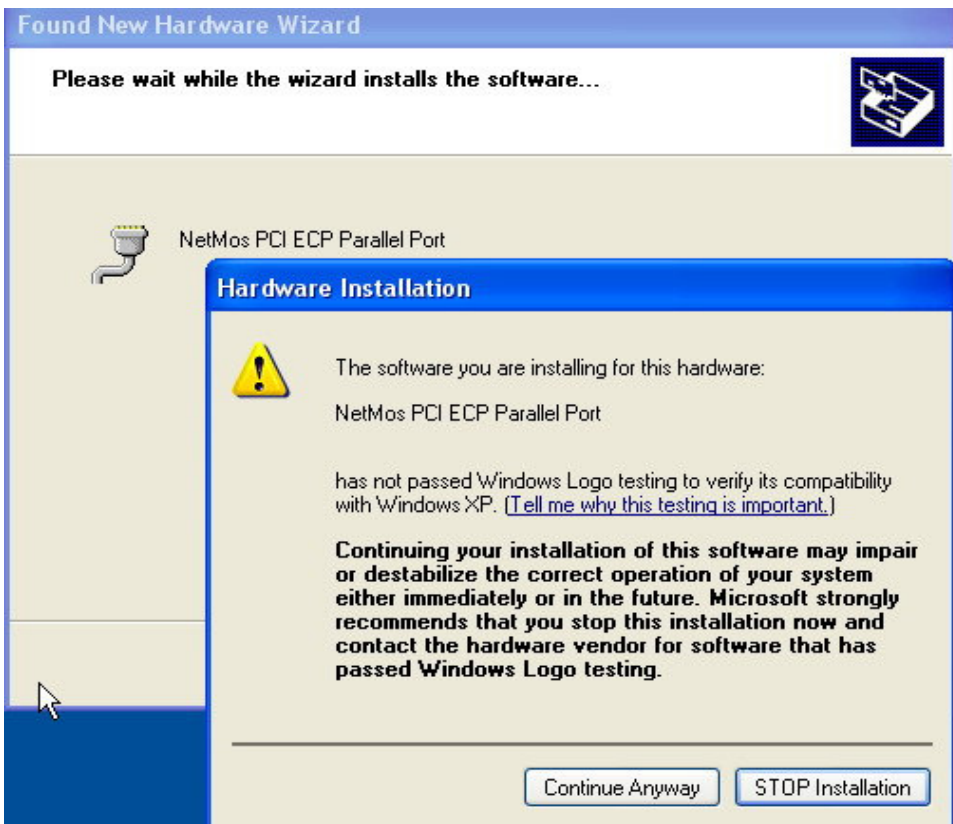


PCI 2 Port Fast Serial/ 1 Port EPP Combo Card

9. Choose “Search for the best driver in these locations.” and enter the directory “NM9XXX\WINXP” of the CD Drive, then press Next button.



10. Click “Continue Anyway” button.



11. Click “Finish” button.

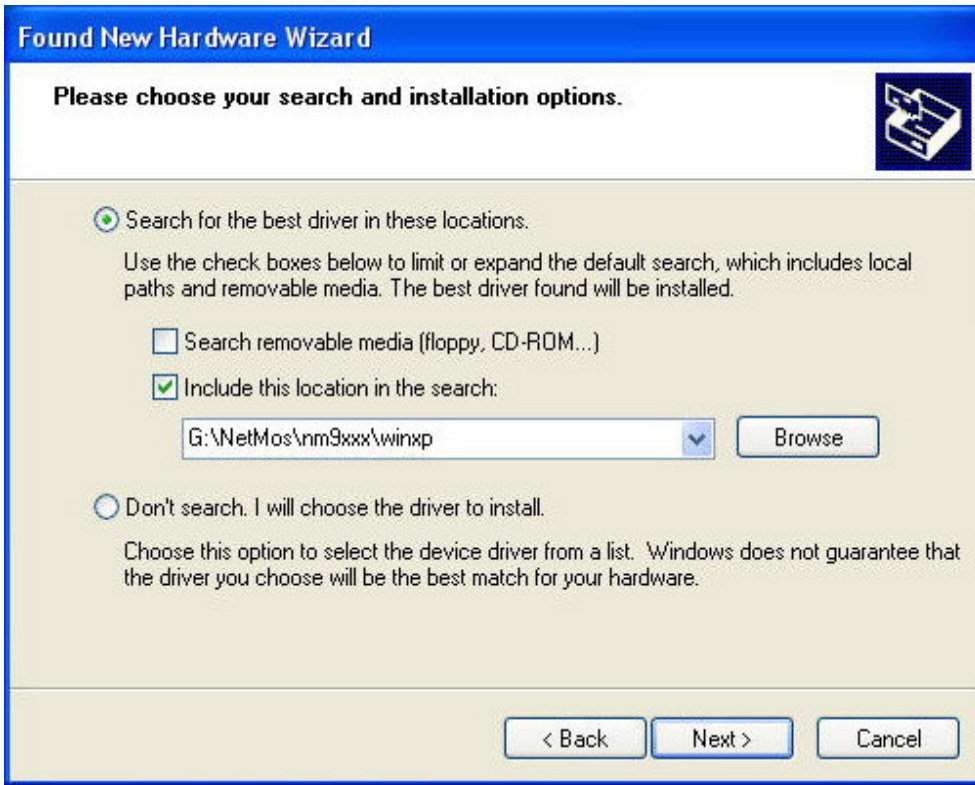


12. Windows will detect “NetMos PCI Serial Port”. Choose “Install from a list or specific location (Advanced)” and click “Next” button.

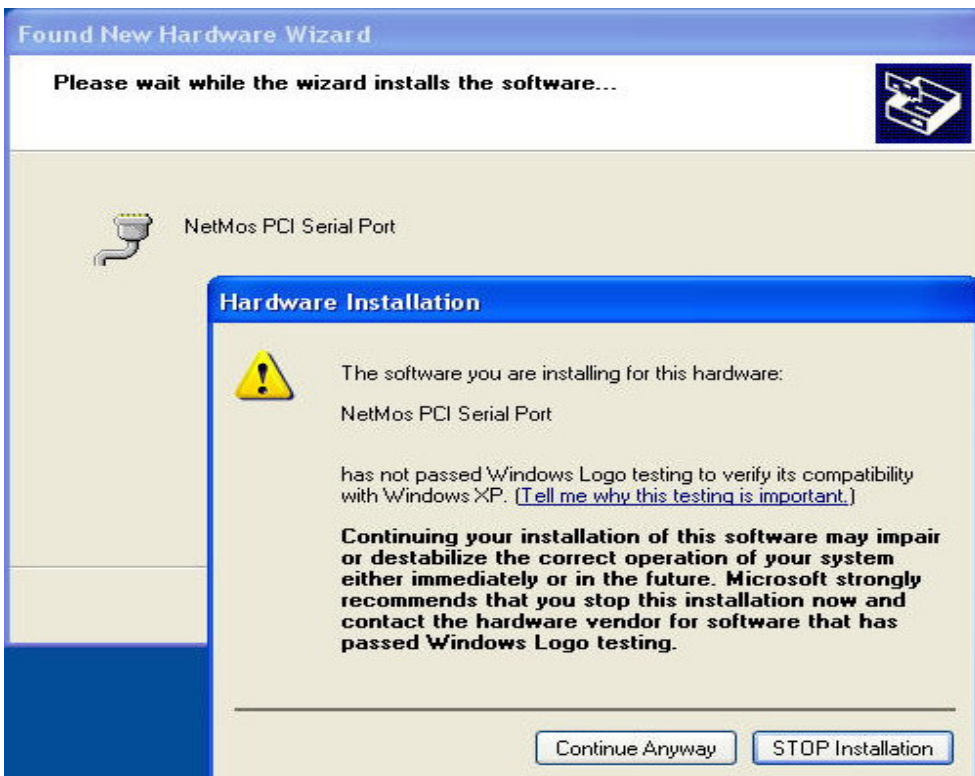


13. Choose “Search for the best driver in these locations.” and enter the directory “NM9XXX\WINXP” of the CD Drive, then press Next button.

PCI 2 Port Fast Serial/ 1 Port EPP Combo Card

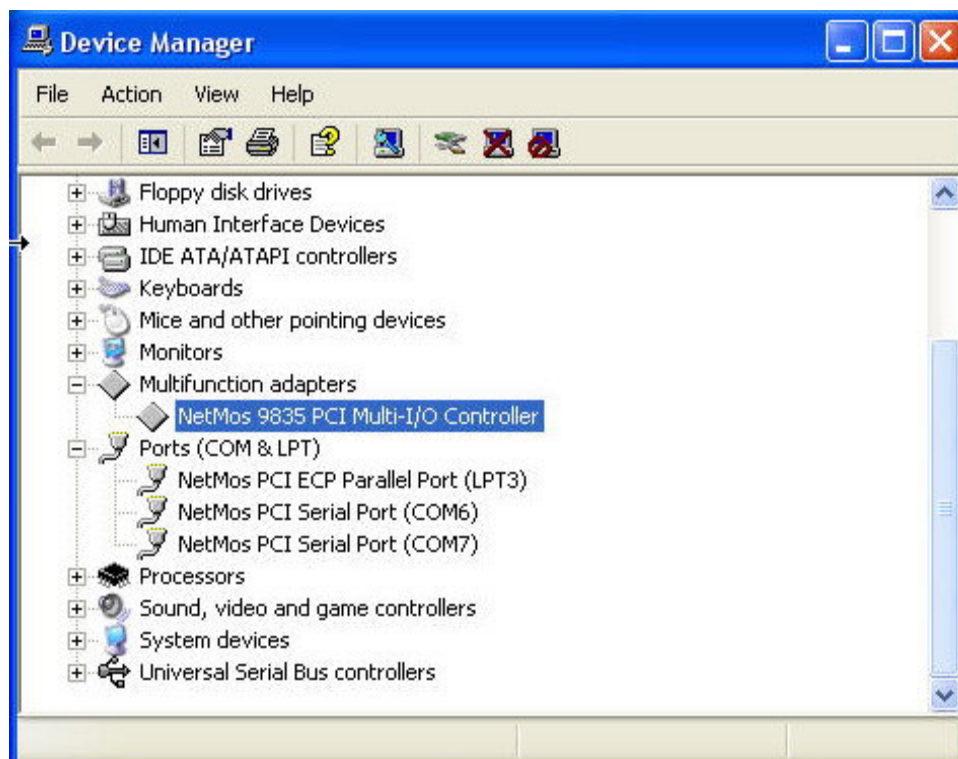


14. Windows will detect “NetMos PCI Serial Port”, press the Continue Anyway button.



15. Repeat Steps 12 to 14 for installing the second NetMos PCI Serial Port.

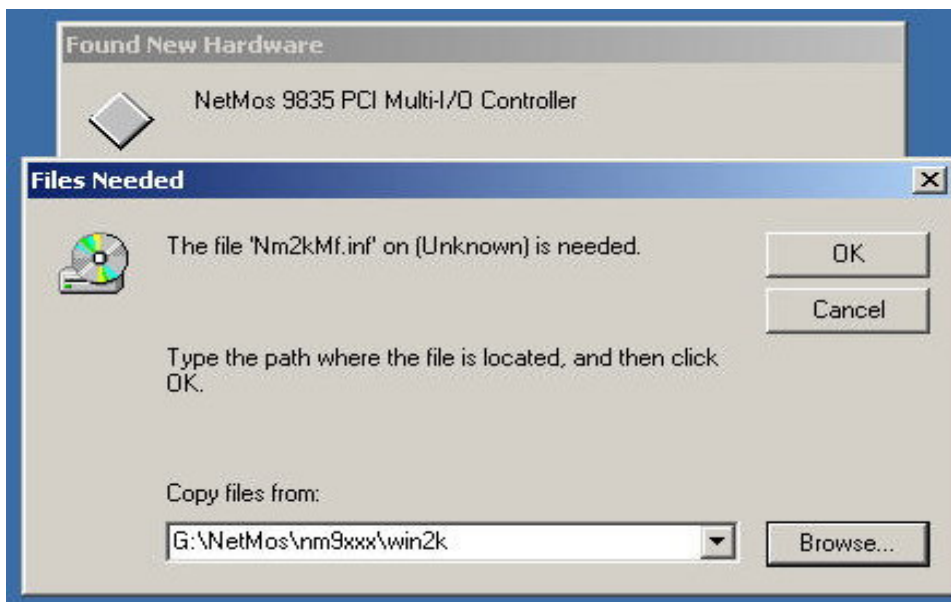
16. After driver installation, system manager will show “NetMos 9835 PCI Multi-I/O Controller” in Multifunction adapters and “NetMos PCI ECP Parallel Port” and “NetMos PCI Serial Port (COM6)/COM(7)” in Ports (COM & LPT).



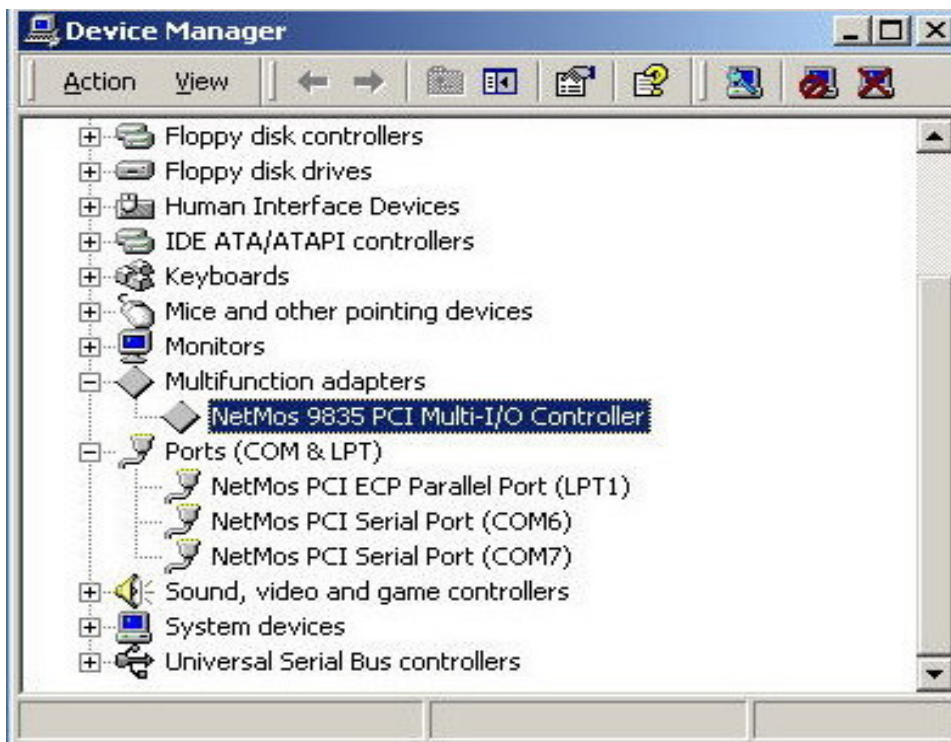
Driver Installations (Windows 2000)

1. Power off the computer.
2. Install the PCI Card in a PCI slot.
3. Power on the computer and let the operating system detects the Card.
4. Windows will detect the Device, please enter the CD Drive path & the driver directory, e.g. G:\Netmos\nm9xxx\win2k.

PCI 2 Port Fast Serial/ 1 Port EPP Combo Card



5. After Driver installation, Device Manager will show “NetMos 9835 PCI Multi-I/O Controller” in Multifunction adapters and “NetMos PCI ECP Parallel Port(LPT1)” and “NetMos PCI Serial Port (COM6)/(COM7)” in Ports (COM & LPT).



Driver Installations (Windows ME)

1. Power off the computer.
2. Install the PCI Card in a PCI slot.
3. Power on the computer and let the operating system detect the Card.
4. Windows will detect “PCI Communication Device”. Choose “Specify the location of the driver (Advanced)” and press “Next” button.



5. Choose “Search for the best driver for your device (Recommended)” and “Specify a location:”. Type the CD driver path and driver directory, e.g. F:\NetMos\nm9xxx\winme.



6. Windows will detect “NetMos PCI 9835 Multi-I/O Controller”. Press the

PCI 2 Port Fast Serial/ 1 Port EPP Combo Card

“Next” button.



7. Click “Finish” button when Windows finish the driver installation.



PCI 2 Port Fast Serial/ 1 Port EPP Combo Card

8. After System reboot, Device Manager will show “NetMos PCI 9835 Multi-I/O Controller” in NetMosMultiFunction, and “NetMos PCI Parallel Port (LPT1)”, and “NetMos PCI Serial Port (COM1)/(COM2)” in Ports (COM & LPT).

