

PCI 1 Port EPP Adapter Card

PCI 1 Port EPP Adapter Card User Manual

Product Features :

- PCI compatible 1284 printer port
- Multi-mode compatible controller supports SPP, PS2, EPP, ECP
- Fast data rates up to 1.5Mbytes
- 16 byte FIFO
- Re-map function for legacy port
- Microsoft compatible
- Software programmable mode selects

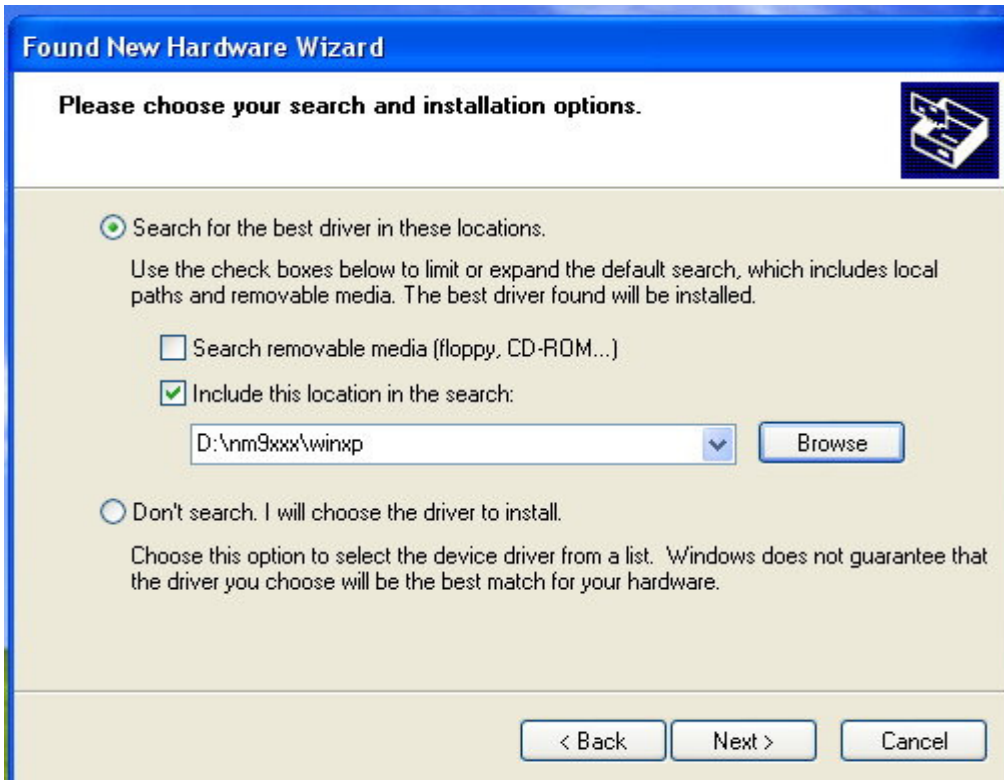
Driver Installations (Windows XP)

1. Power off the computer.
2. Install the PCI Card in a PCI slot.
3. Power on the computer and let the operating system detect the Card.
4. Choose “Install from a list or specific location (Advanced)”, then press Next button.

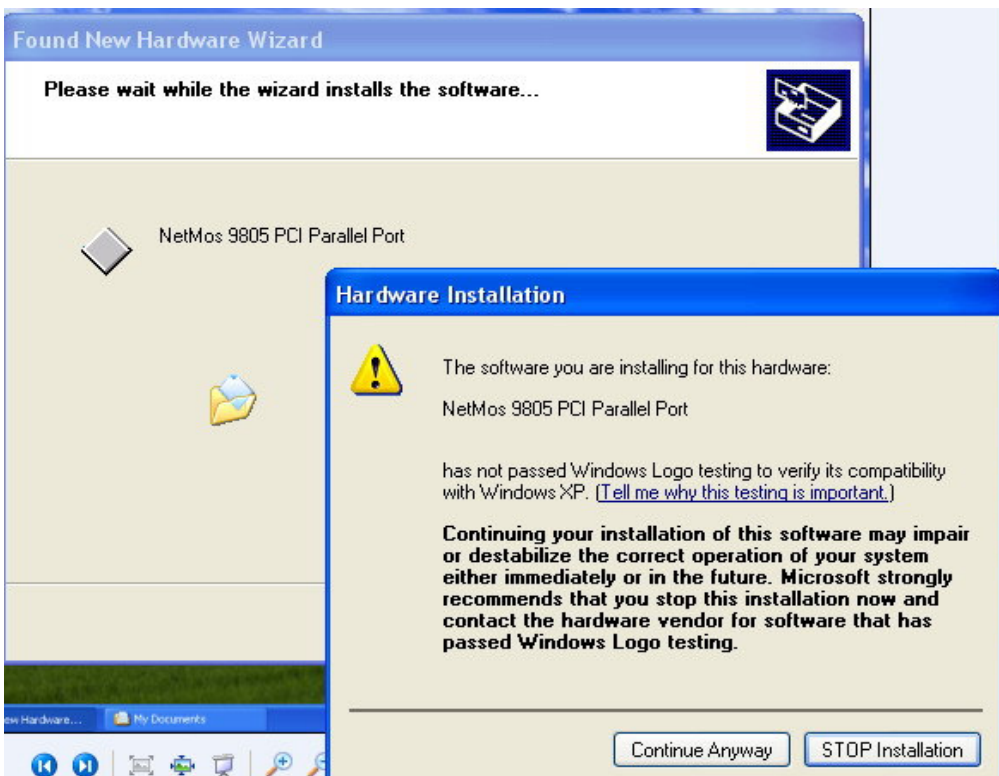


PCI 1 Port EPP Adapter Card

5. Choose “Search for the best driver in these locations.” and enter the directory “NM9XXX\WINXP” of the CD Drive, then press Next button.



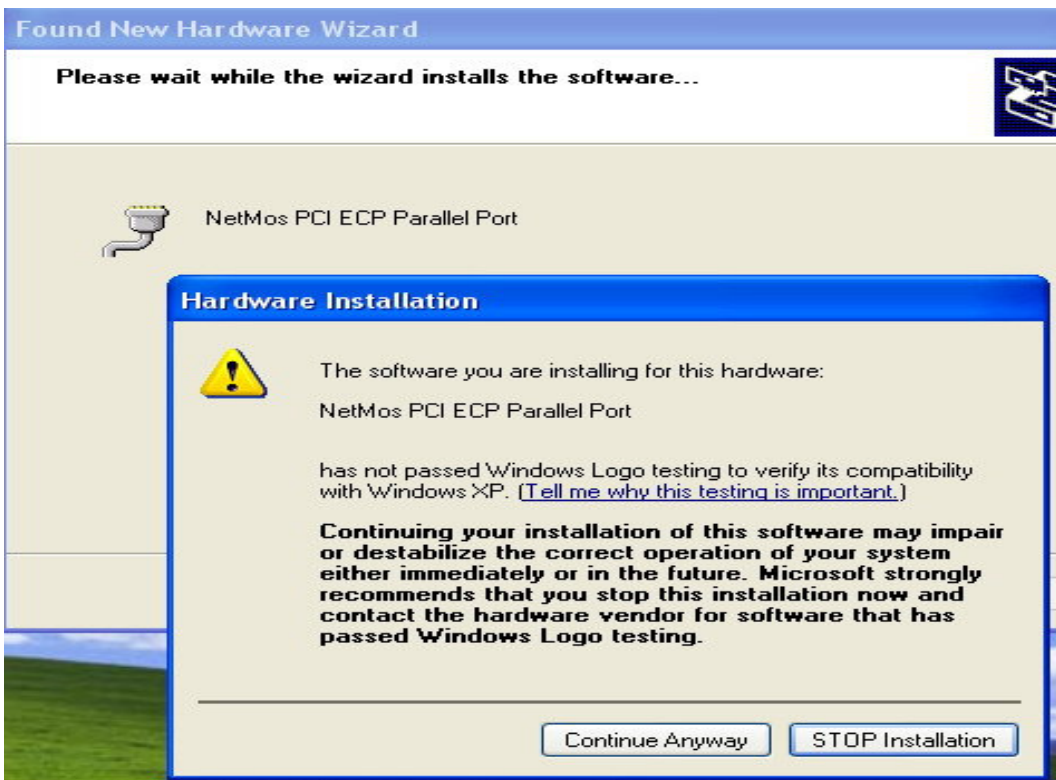
6. Windows will detect “NetMos 9805 PCI Parallel Port”, press the Continue Anyway button.



7. Windows detects again with “NetMos PCI ECP Parallel Port”.

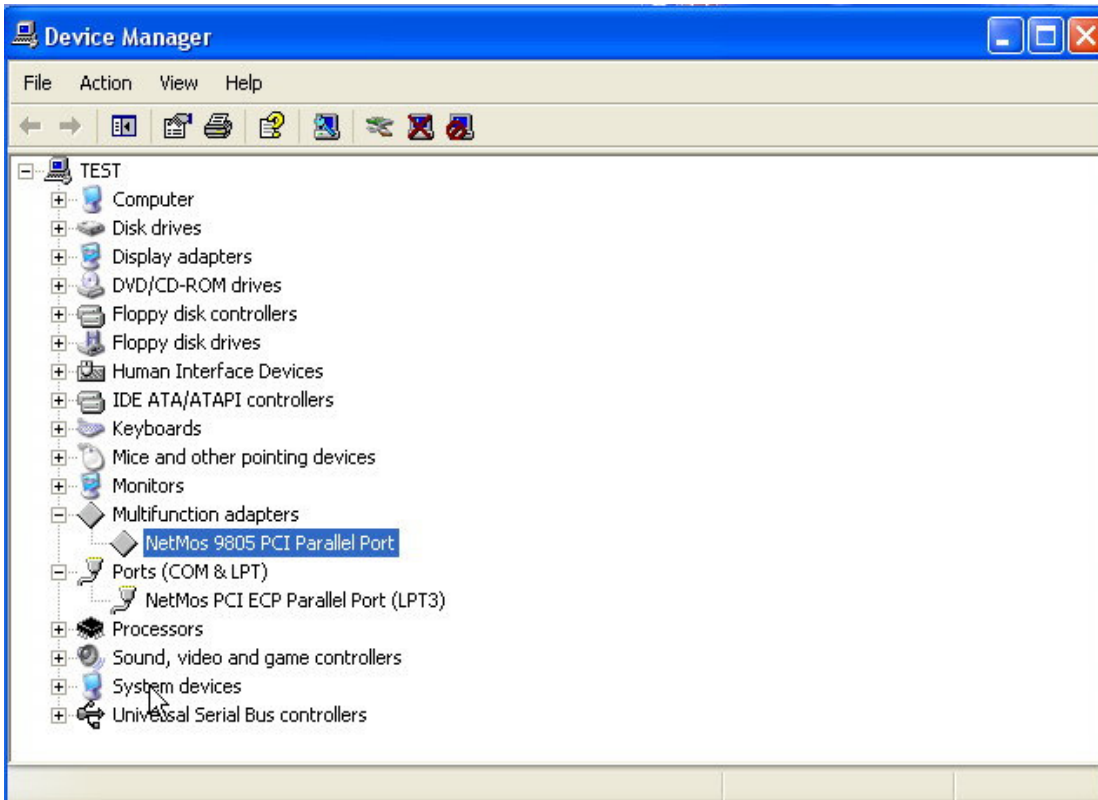


8. Windows will detect “NetMos PCI ECP Parallel Port”. Press Continue Anyway button.



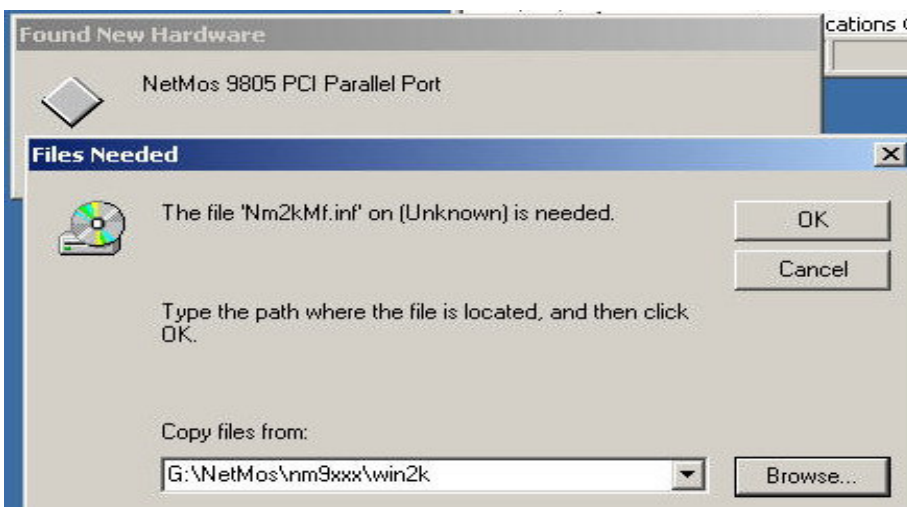
PCI 1 Port EPP Adapter Card

9. After driver installation, system manager will shows “NetMos 9805 PCI Parallel Port”



Driver Installations (Windows 2000)

1. Power off the computer.
2. Install the PCI Card in a PCI slot.
3. Power on the computer and let the operating system detects the Card.
4. Windows will detect the Device, please enter the CD Drive path & the driver directory, e.g. G:\Netmos\nm9xxx\win2k.



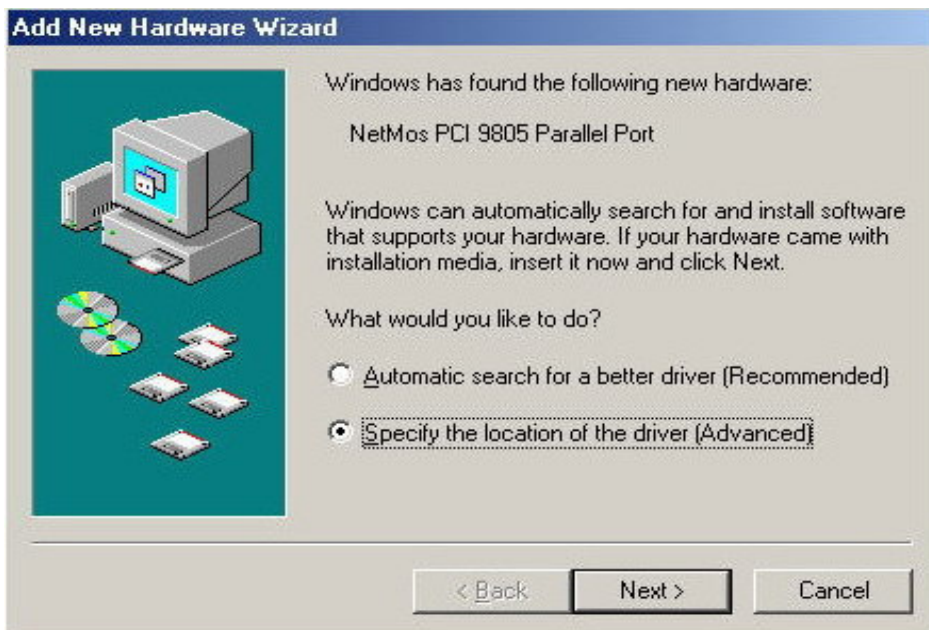
PCI 1 Port EPP Adapter Card

5. After Driver installation, Device Manager will show “Netmos 9805 PCI Parallel Port” in Multifunction adapters.



Driver Installations (Windows ME)

1. Power off the computer.
2. Install the PCI Card in a PCI slot.
3. Power on the computer and let the operating system detect the Card.
4. Choose “Specify the location of the driver (Advanced)”, then press Next button.



PCI 1 Port EPP Adapter Card

5. Choose Search for the best driver for your device and specify a location where the CD Driver & driver directory is, e.g. F:\Netmos\nm9xxx\winme.



6. Choose “The updated software(Recommended), NetMos PCI 9805 Parallel Port”.



PCI 1 Port EPP Adapter Card

7. Windows will install the device driver.



8. Windows will restart the computer.



PCI 1 Port EPP Adapter Card

9. After reboot, Device Manager will show “NetMos PCI 9805 Parallel Port” in “NetMosMultiFunction”.

