



## Application of Interface Material (1/2)

Interface Material is a kind of high thermal conduction material, which can provide more contact surface between CPU and cooler, and let the CPU heat (thermal power) more easier and quicker transfer to cooler.

Currently, most of Cooler Master's coolers are attaching Phase-Change Interface Material on them. When the CPU surface temperature goes up 50~60°C, the Phase-Change Interface Material will auto melt. During this melting period, the Interface Material will fill the roughness area between CPU and Cooler. It will generate more contact surface and area between CPU and Cooler than normal Interface Material.

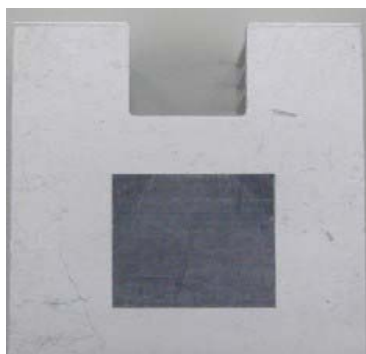
Some Phase-Change Interface Materials have **Protect Sheet (Release Liner)** to protect the Interface Material not be damaged during the operation or transportation. So, this protect sheet must be took off before apply cooler on to CPU. Following pictures show you which Interface Materials need to take off Protect Sheet and which don't need.

### A. With Plastic Tray for Interface Protection with cooler

Currently, most of Cooler Master coolers are using a plastic tray (as picture) to protect the Thermal Interface material. If your cooler is using this kind of Plastic Tray with it, please take off the tray only, and no need to take care the protection sheet.



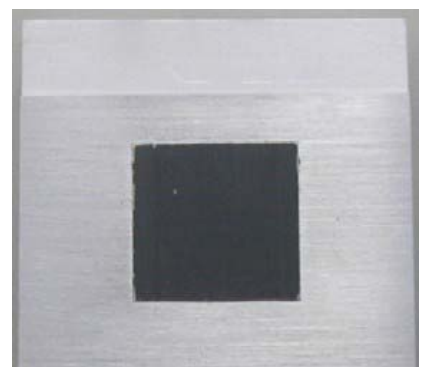
### B. No Protect Sheet Interface Materials (no need to take off Protect Sheet):



Interface: **Graphite Pad**  
Color: **Gray**  
Protect Sheet: **No**



Interface: **AL-S-100-100**  
Color: **White**  
Protect Sheet: **No**



Interface: **AF-S-10H-10B**  
Color: **Black**  
Protect Sheet: **No**



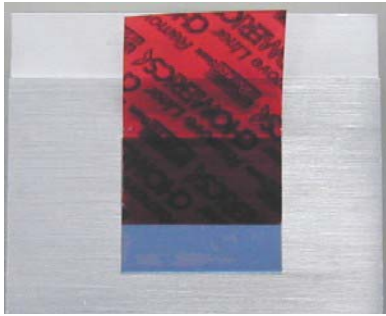
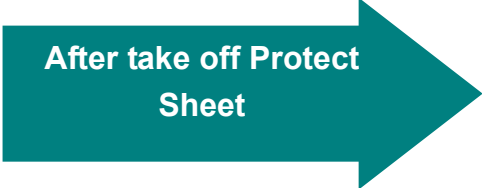
## Application of Interface Material

(2/2)

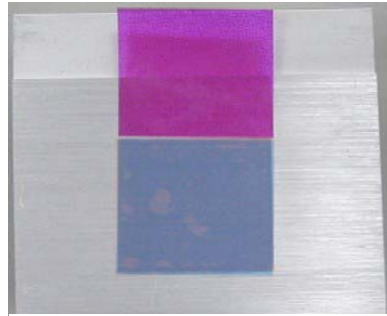
### C. With Protect Sheet Interface Materials (need to take off Protect Sheet):



Interface: **C1055**  
Interface Color: **Yellow**  
Protect Sheet: **Yes**  
Plastic with Pink/White Colors



Interface: **T725**  
Protect Sheet: **Yes**  
Plastic with Red/Blue Colors



Interface: **T725**  
Protect Sheet: **Yes**  
Plastic with Pink/Blue Colors



Interface: **T725**  
Protect Sheet: **Yes**  
Paper with Yellow Colors



Interface: **T725**  
Interface Color: **Pink**