

PCI 4 Port Fast Serial Communication Adapter Card

PCI 4 Port Fast Serial Communication Adapter Card User Manual

Product Features :

- PCI compatible quad UART
- 16 byte transmit-receive FIFO (UART)
- Programmable baud rate generator
- Modem control signals
- 5, 6, 7, 8 bit characters selection
- Even, odd, no parity, or force parity generations
- Status report capability
- On-chip oscillator
- Re-map function for legacy ports
- ISA style I/O interface
- 3 Address lines
- 4 Active high interrupts
- 1 Active low interrupt
- Microsoft compatible
- Fast data rates up to 1Mbytes/s

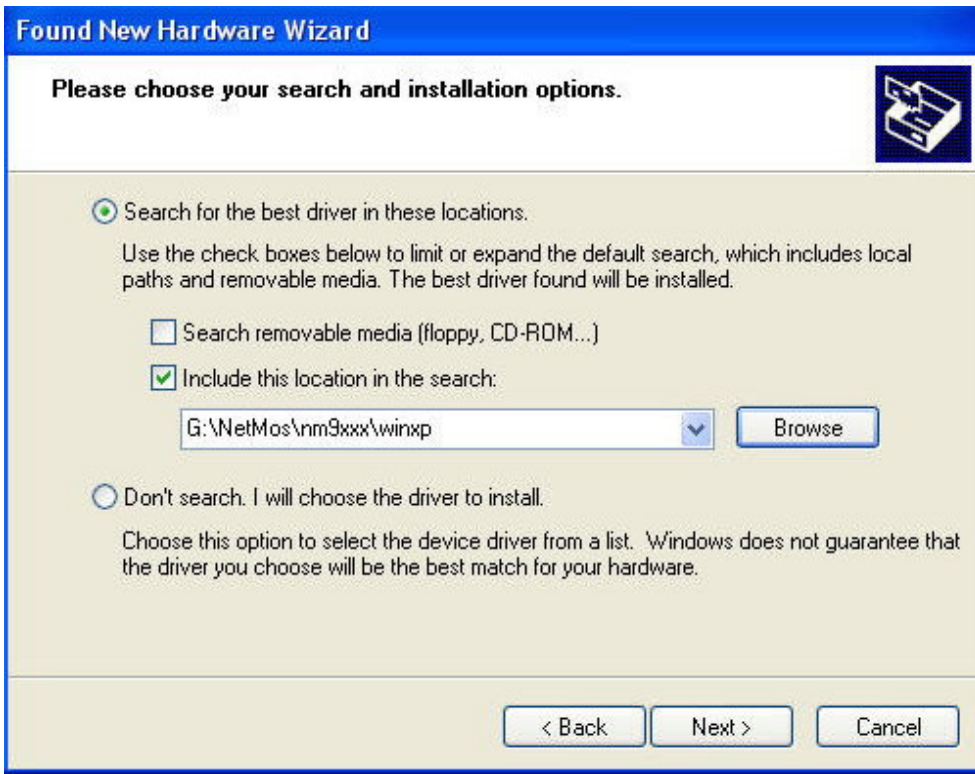
Driver Installations (Windows XP)

1. Power off the computer.
2. Install the PCI Card in a PCI slot.
3. Power on the computer and let the operating system detects the Card.
4. Choose “Install from a list or specific location (Advanced)”, then press Next button.

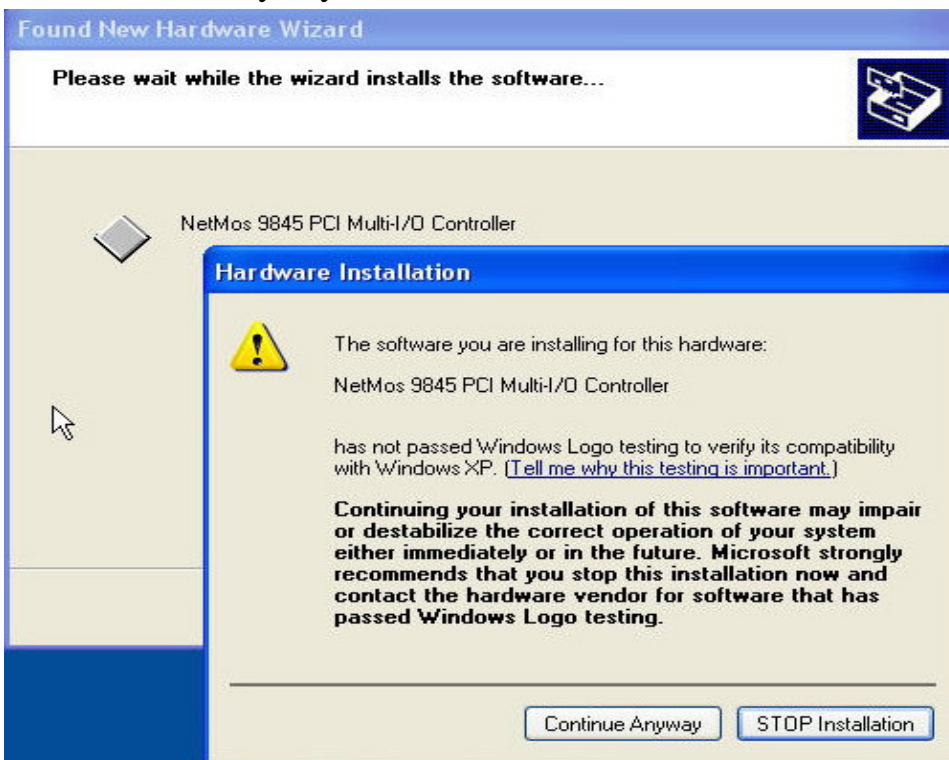


PCI 4 Port Fast Serial Communication Adapter Card

5. Choose “Search for the best driver in these locations.” and enter the directory “NM9XXX\WINXP” of the CD Drive, then press Next button.

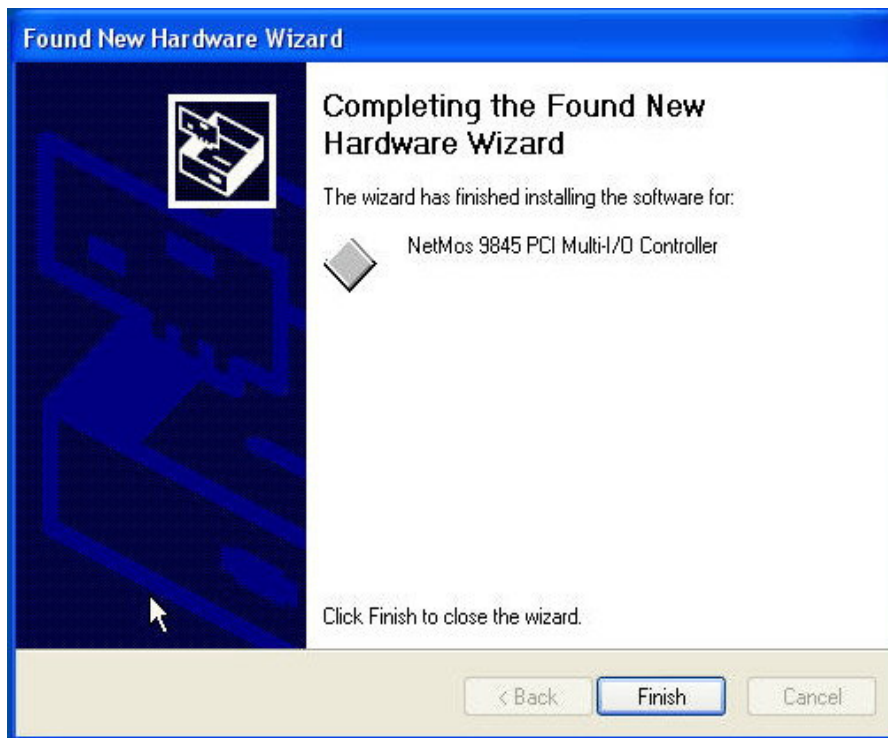


6. Windows will detect “NetMos 9835 PCI Multi-I/O Controller”, press the Continue Anyway button.



PCI 4 Port Fast Serial Communication Adapter Card

7. Please click “Finish” button to end the driver installation.

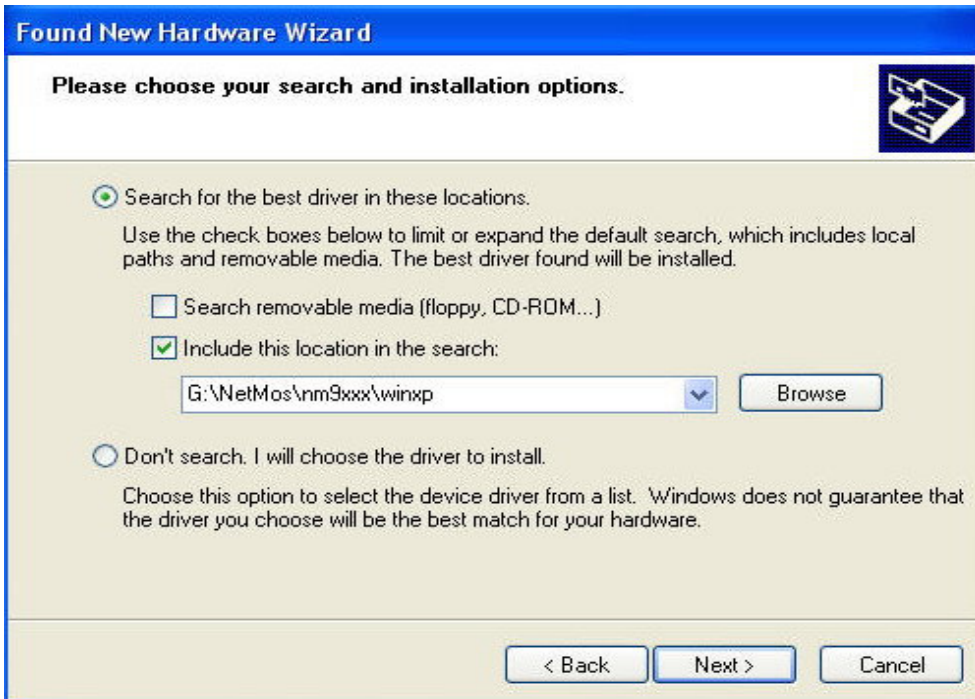


8. Windows will detect “NetMos Bridge”. Choose “Install from a list or specific location (Advanced)”, then press Next button.

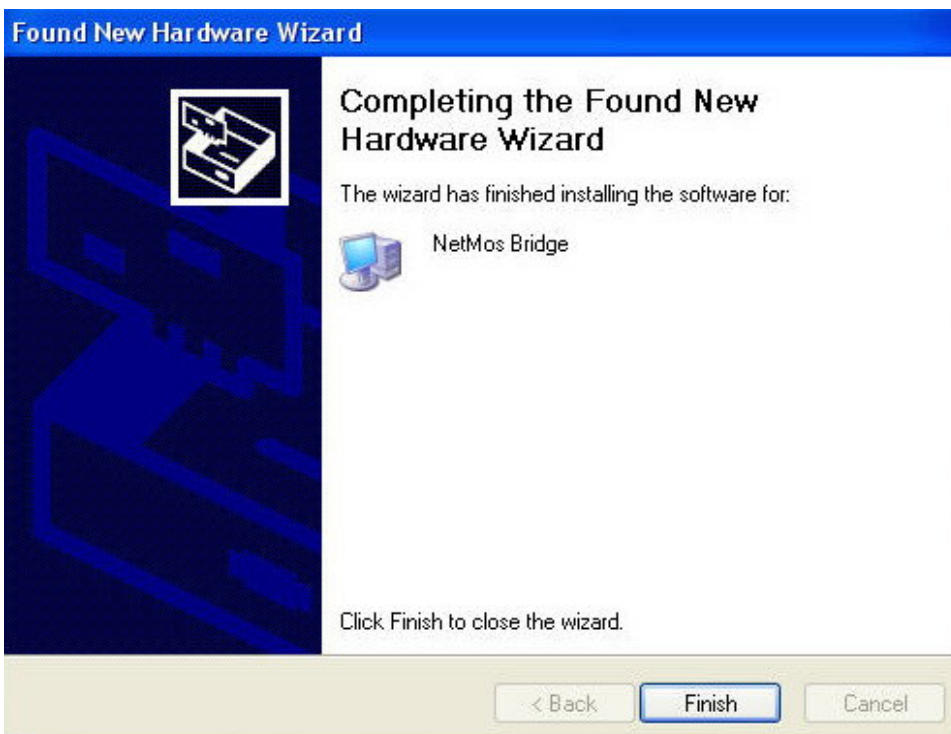


PCI 4 Port Fast Serial Communication Adapter Card

9. Choose “Search for the best driver in these locations.” and enter the directory “NM9XXX\WINXP” of the CD Drive, then press Next button.



10. Click “Finish” when NetMos Bridge driver is installed.

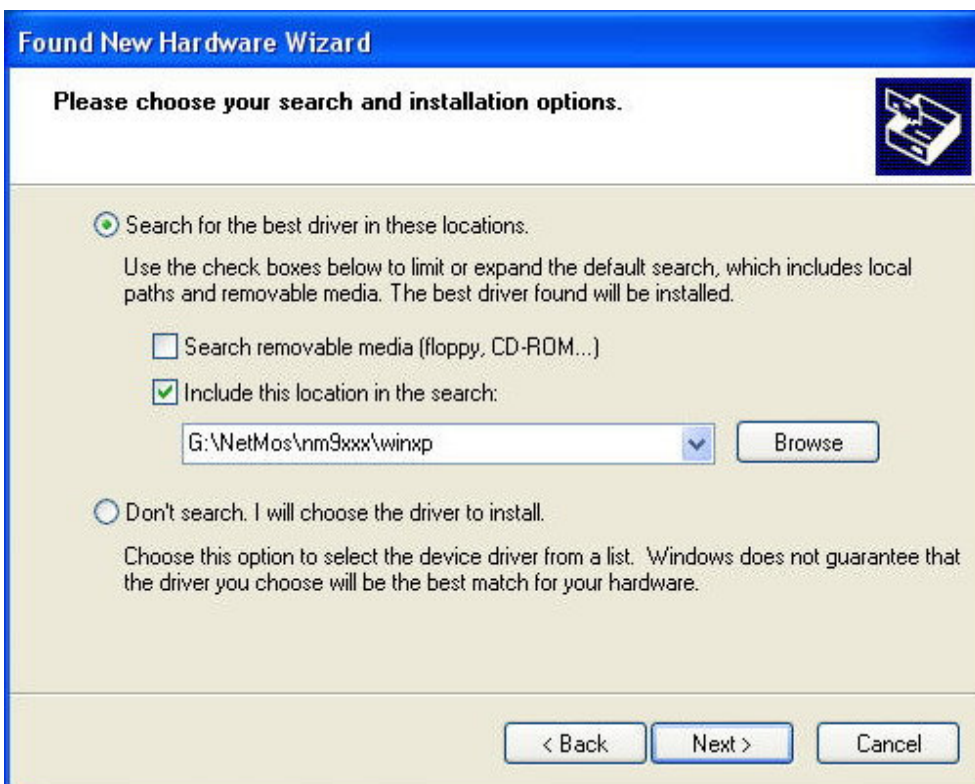


11. Windows will detect “NetMos PCI Serial Port”. Choose “Install from a list or specific location (Advanced)” and click “Next” button.

PCI 4 Port Fast Serial Communication Adapter Card

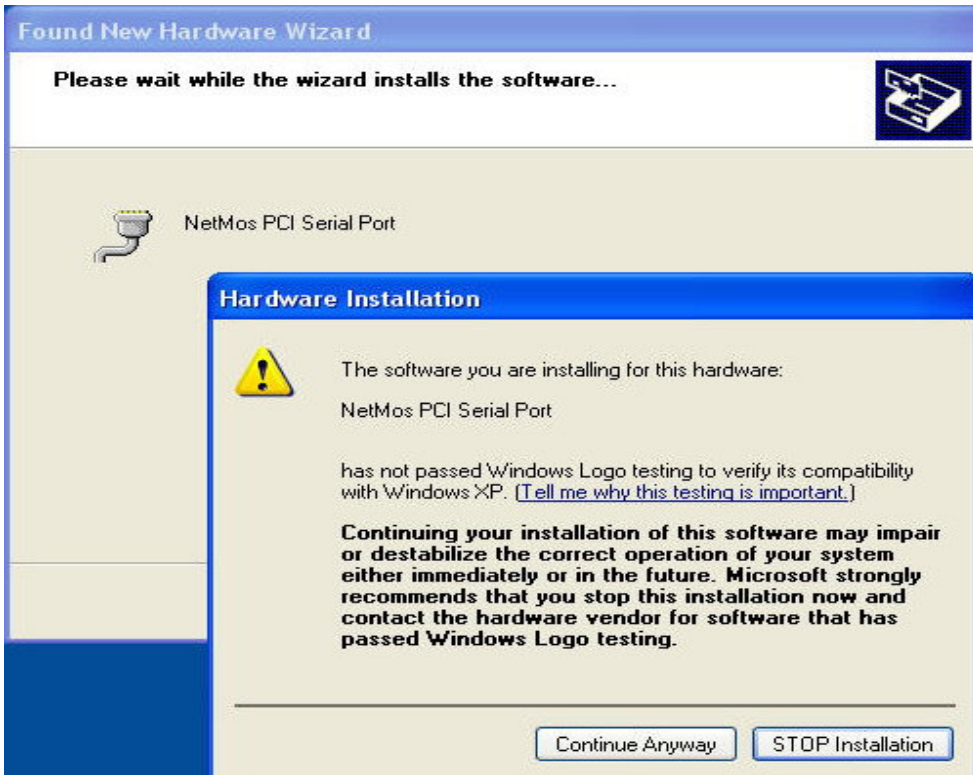


12. Choose “Search for the best driver in these locations.” and enter the directory “NM9XXX\WINXP” of the CD Drive, then press Next button.



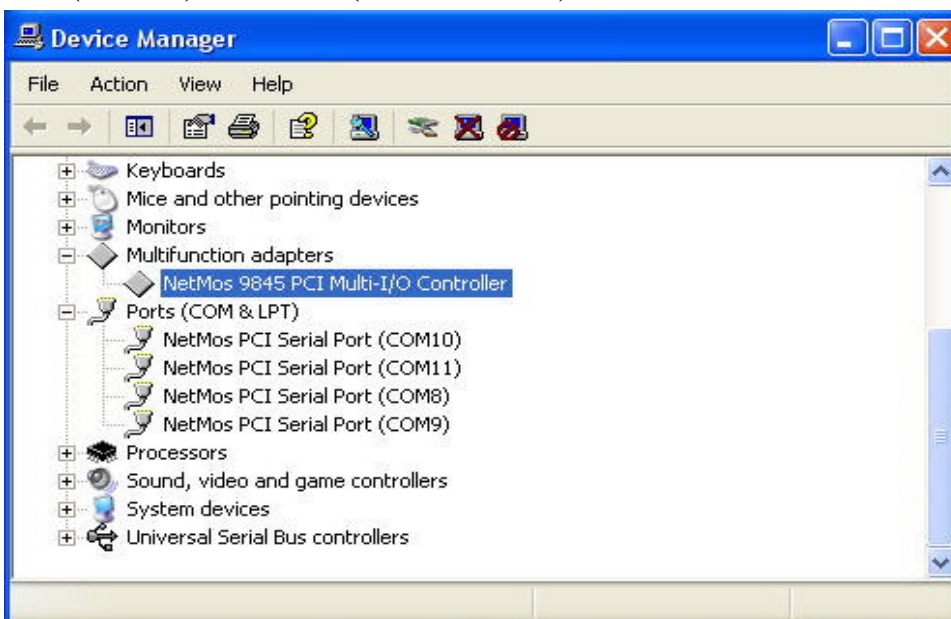
13. Windows will detect “NetMos PCI Serial Port”, press the Continue Anyway button.

PCI 4 Port Fast Serial Communication Adapter Card



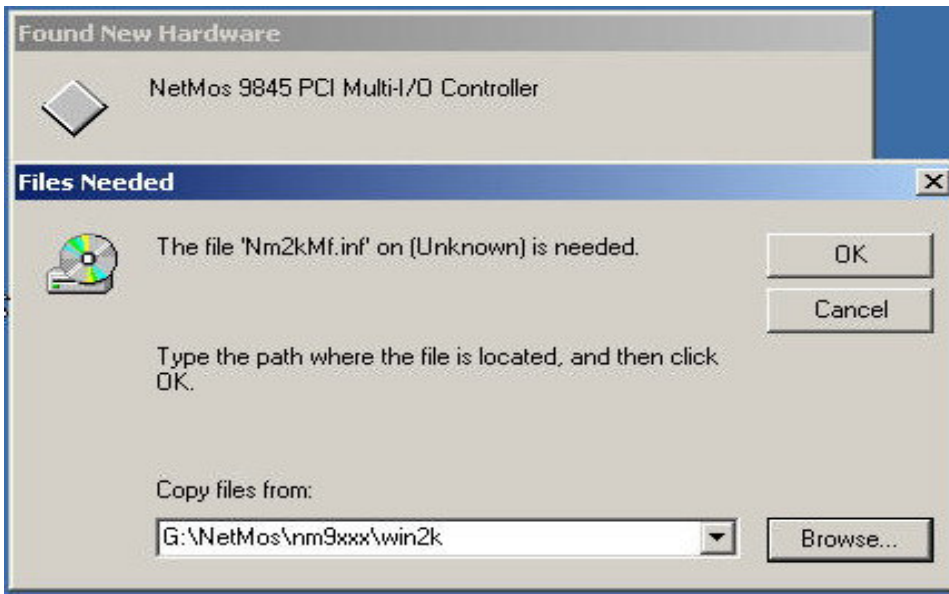
14. Repeat Steps 12 to 14 for installing all the rest NetMos PCI Serial Ports.

15. After driver installation, system manager will show “NetMos 9845 PCI Multi-I/O Controller” in Multifunction adapters and four “NetMos PCI Serial Port (COM4)” in Ports (COM & LPT).

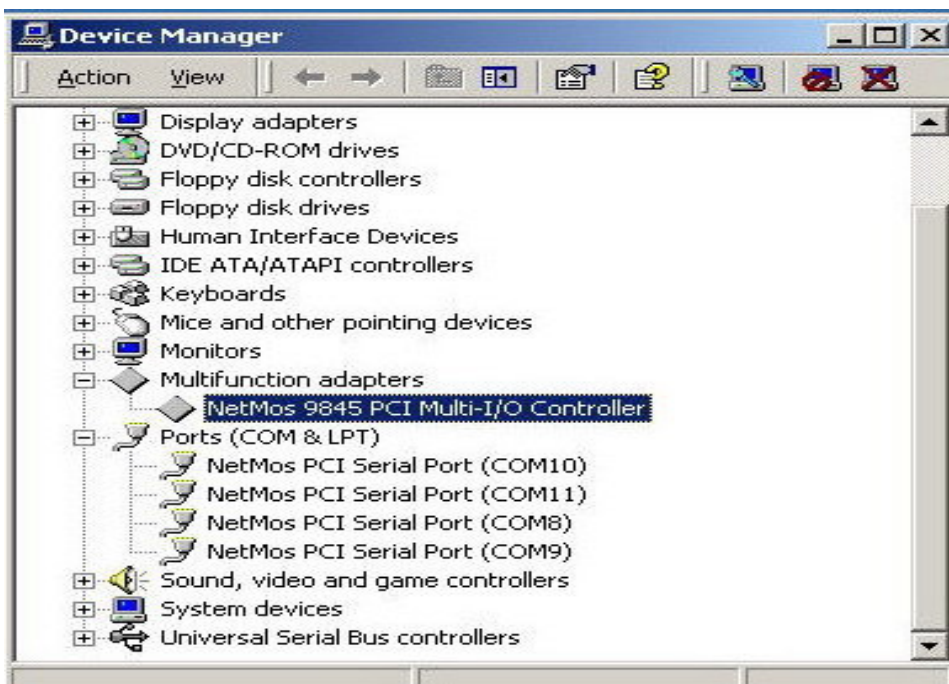


Driver Installations (Windows 2000)

1. Power off the computer.
2. Install the PCI Card in a PCI slot.
3. Power on the computer and let the operating system detect the Card.
4. Windows will detect the Device, please enter the CD Drive path & the driver directory, e.g. G:\Netmos\nm9xxx\win2k.

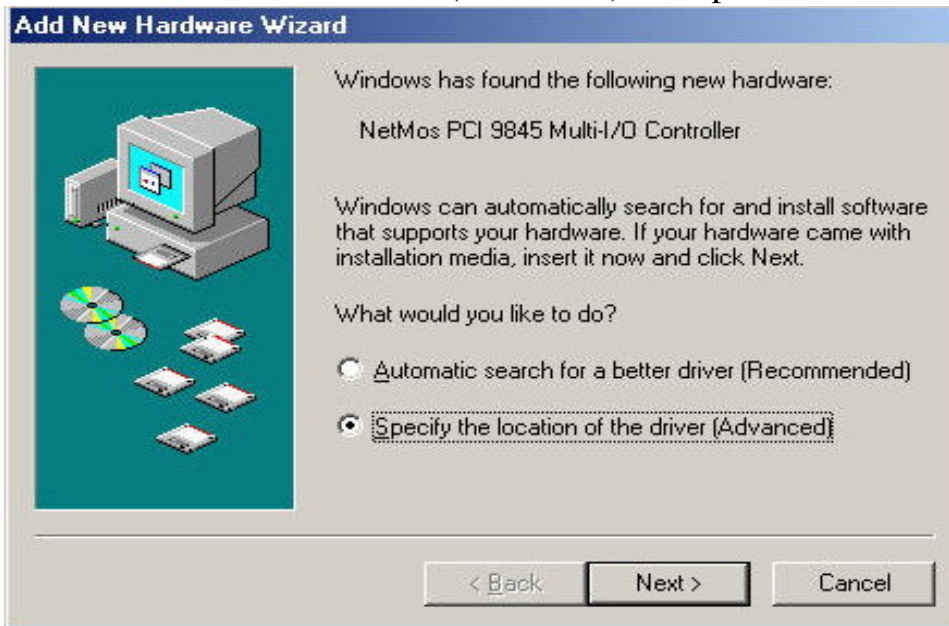


5. After Driver installation, Device Manager will show “NetMos 9845 PCI Multi-I/O Controller” in Multifunction adapters and four “NetMos PCI Serial Port (COM4)” in Ports (COM & LPT).



Driver Installations (Windows ME)

1. Power off the computer.
2. Install the PCI Card in a PCI slot.
3. Power on the computer and let the operating system detect the Card.
4. Windows will detect “NetMos PCI 9845 Multi-I/O Controller”. Choose “Specify the location of the driver (Advanced)” and press “Next” button.



5. Choose “Search for the best driver for your device (Recommended)” and “Specify a location:”. Type the CD driver path and driver directory, e.g. F:\NetMos\nm9xxx\winme.



PCI 4 Port Fast Serial Communication Adapter Card

- Windows will detect “NetMos PCI 9845 Multi-I/O Controller”. Press the “Next” button.



- Click “Finish” button when Windows finish the driver installation.



- After Device driver installation, Device Manager will show “NetMos PCI 9845 Multi-I/O Controller” in NetMosMultiFunction and four “NetMos PCI Serial Port (COM1)” in Ports (COM & LPT).

PCI 4 Port Fast Serial Communication Adapter Card

